



**US Army Corps
of Engineers**

Hydrologic Engineering Center

Runoff Simulation Using Radar Rainfall Data

August 1996

REPORT DOCUMENTATION PAGE

Form Approved OMB No. 0704-0188

The public reporting burden for this collection of information is estimated to average 1 hour per response, including the time for reviewing instructions, searching existing data sources, gathering and maintaining the data needed, and completing and reviewing the collection of information. Send comments regarding this burden estimate or any other aspect of this collection of information, including suggestions for reducing this burden, to the Department of Defense, Executive Services and Communications Directorate (0704-0188). Respondents should be aware that notwithstanding any other provision of law, no person shall be subject to any penalty for failing to comply with a collection of information if it does not display a currently valid OMB control number.

PLEASE DO NOT RETURN YOUR FORM TO THE ABOVE ORGANIZATION.

1. REPORT DATE (DD-MM-YYYY) August 1996		2. REPORT TYPE Technical Paper		3. DATES COVERED (From - To)	
4. TITLE AND SUBTITLE Runoff Simulation Using Radar Rainfall Data				5a. CONTRACT NUMBER	
				5b. GRANT NUMBER	
				5c. PROGRAM ELEMENT NUMBER	
6. AUTHOR(S) John C. Peters, Daniel J. Easton				5d. PROJECT NUMBER	
				5e. TASK NUMBER	
				5f. WORK UNIT NUMBER	
7. PERFORMING ORGANIZATION NAME(S) AND ADDRESS(ES) US Army Corps of Engineers Institute for Water Resources Hydrologic Engineering Center (HEC) 609 Second Street Davis, CA 95616-4687				8. PERFORMING ORGANIZATION REPORT NUMBER TP-155	
9. SPONSORING/MONITORING AGENCY NAME(S) AND ADDRESS(ES)				10. SPONSOR/ MONITOR'S ACRONYM(S)	
				11. SPONSOR/ MONITOR'S REPORT NUMBER(S)	
12. DISTRIBUTION / AVAILABILITY STATEMENT Approved for public release; distribution is unlimited.					
13. SUPPLEMENTARY NOTES This is Paper No. 95150, published in Vol. 32, No. 4 of the Water Resources Bulletin (American Water Resources Association), August 1996.					
14. ABSTRACT Rainfall data products generated with the national network of WSR-88D radars are an important new data source provided by the National Weather Service. Radar-based data include rainfall depth on an hourly basis for grid cells that are nominally 4 km ² . The availability of such data enables application of improved techniques for rainfall-runoff simulation. A simple quasi-distributed approach that applies a linear runoff transform to gridded rainfall excess has been developed. The approach is an adaptation of the Clark conceptual runoff model, which employs translation and linear storage. Data development for, and results of, an initial application to a 4,160 km ² watershed in the Midwestern U.S. are illustrated.					
15. SUBJECT TERMS hydrograph analysis and modeling, simulation, surface water hydrology, radar					
16. SECURITY CLASSIFICATION OF:			17. LIMITATION OF ABSTRACT UU	18. NUMBER OF PAGES 16	19a. NAME OF RESPONSIBLE PERSON
a. REPORT U	b. ABSTRACT U	c. THIS PAGE U			19b. TELEPHONE NUMBER

Runoff Simulation Using Radar Rainfall Data

August 1996

US Army Corps of Engineers
Institute for Water Resources
Hydrologic Engineering Center
609 Second Street
Davis, CA 95616

(530) 756-1104
(530) 756-8250 FAX
www.hec.usace.army.mil

TP-155

Papers in this series have resulted from technical activities of the Hydrologic Engineering Center. Versions of some of these have been published in technical journals or in conference proceedings. The purpose of this series is to make the information available for use in the Center's training program and for distribution with the Corps of Engineers.

The findings in this report are not to be construed as an official Department of the Army position unless so designated by other authorized documents.

The contents of this report are not to be used for advertising, publication, or promotional purposes. Citation of trade names does not constitute an official endorsement or approval of the use of such commercial products.

RUNOFF SIMULATION USING RADAR RAINFALL DATA¹

John C. Peters and Daniel J. Easton²

ABSTRACT: Rainfall data products generated with the national network of WSR-88D radars are an important new data source provided by the National Weather Service. Radar-based data include rainfall depth on an hourly basis for grid cells that are nominally 4 km square. The availability of such data enables application of improved techniques for rainfall-runoff simulation. A simple quasi-distributed approach that applies a linear runoff transform to gridded rainfall excess has been developed. The approach is an adaptation of the Clark conceptual runoff model, which employs translation and linear storage. Data development for, and results of, an initial application to a 4160 km² watershed in the Midwestern U.S. are illustrated.

(**KEY TERMS:** hydrograph analysis and modeling; simulation; surface water hydrology; radar.)

grid cells are superposed on the basin, and rainfall and losses are tracked uniquely for each cell. Rainfall excess for each cell is lagged to the basin outlet by the cell's travel time (i.e., time of travel from the cell to the basin outlet). The lagged excesses are routed through a linear reservoir, and baseflow is added to obtain a total-runoff hydrograph. The computer program that performs these computations is the Modified Clark (modClark) Runoff Simulation Program (HEC, 1995a).

RADAR RAINFALL DATA

INTRODUCTION

Traditional application of the unit hydrograph approach to runoff simulation involves the use of spatially averaged (lumped) values of basin rainfall and infiltration (losses). This approach has been of practical value because data available from typically sparse rain-gage networks are generally inadequate to justify more spatially detailed simulation methods. The availability of "new-generation" radar rainfall data enhances the attractiveness of distributed simulation approaches that take into account spatial variations of rainfall and watershed characteristics.

To facilitate initial use of radar rainfall data, a relatively simple quasi-distributed approach has been developed that applies a linear runoff transform to gridded rainfall excess. The approach is an adaptation of the Clark conceptual runoff model (Clark, 1943), which represents surface runoff with translation and linear-storage attenuation. In this adaptation, radar

A national network of WSR-88D (Weather Surveillance Radar-88 Doppler) radars is being deployed by the National Weather Service (NWS). Processing of precipitation data by the NWS is done in stages (Shedd and Fulton, 1993). Stage III products incorporate information from "ground truth" rain gages and satellite and surface temperature observations, and they result from merging ("mosaicking") data from overlapping radar coverages. For the application illustrated subsequently, Stage III hourly precipitation data were obtained via Internet from the NWS Arkansas-Red Basin River Forecast Center (ABRFC) in Tulsa, Oklahoma. As of mid-1995, the ABRFC was the only NWS River Forecast Center from which Stage III products were routinely available, although testing of Stage III processing was underway at several other River Forecast Centers.

The Stage III rainfall data are provided for cells defined by the Hydrologic Rainfall Analysis Project (HRAP) grid (Greene and Hudlow, 1982). The HRAP

¹Paper No. 95150 of the *Water Resources Bulletin*. Discussions are open until February 1, 1997.

²Respectively, Senior Engineer, U.S. Army Corps of Engineers, Hydrologic Engineering Center, 609 Second St., Davis, California 95616-4687; and Graduate Student, Department of Civil Engineering, University of California, Davis, California 95616.

grid is uniform on a polar stereographic map projection. Consequently, the dimensions of an HRAP grid cell, as projected on the earth's surface, vary with latitude. Figure 1 illustrates an HRAP grid superposed over four subbasins of the 4160 km² Illinois River watershed upstream from Tenkiller Lake. The watershed is located in northeastern Oklahoma and northwestern Arkansas. The grid cell areas vary in this watershed from 16.3 to 16.5 km².

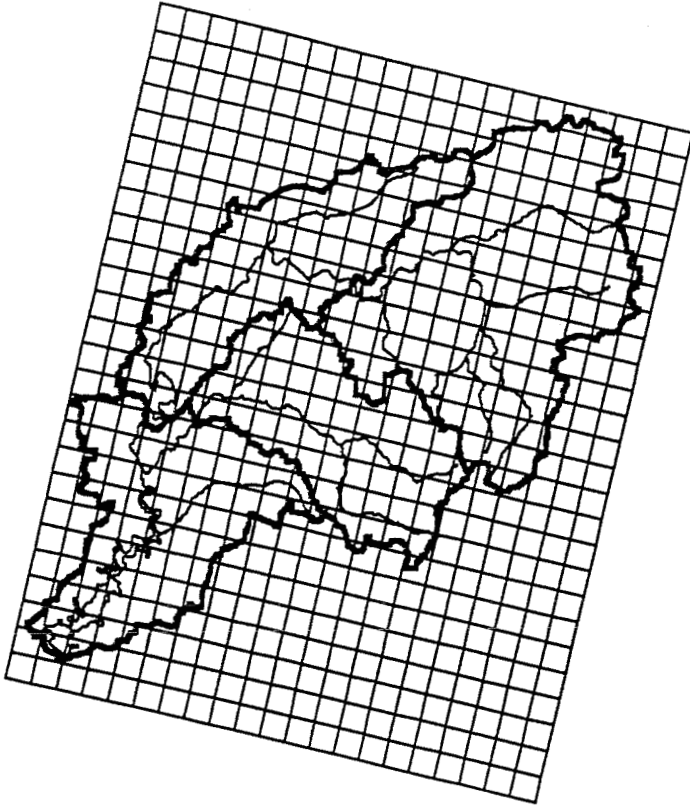


Figure 1. HRAP Grid Superposed on Four Subbasins of the Illinois River Watershed.

Radar rainfall data obtained from the ABRFC is in the netCDF (Network Common Data Form) format (Unidata Program Center, 1991). A utility program titled gridUtl (HEC, 1995b) loads the data into a direct access file associated with the Hydrologic Engineering Center's Data Storage System (HEC-DSS). The Modified Clark program retrieves the gridded rainfall data from an HEC-DSS file.

MODIFIED CLARK METHOD

Two basin parameters are required to transform rainfall excess to direct runoff with the Modified Clark method: time of concentration, T_c ; and storage coefficient (for a linear reservoir), R . Both have units of time. Translation is performed on a grid cell basis by using a travel time index. The travel time (or translation lag) for a grid cell is calculated as follows:

$$(\text{travel time})_{\text{cell}} = T_c \frac{(\text{travel time index})_{\text{cell}}}{(\text{travel time index})_{\text{max}}} \quad (1)$$

where T_c is the time of concentration for the basin, $(\text{travel time index})_{\text{cell}}$ is the travel time index for a cell, and $(\text{travel time index})_{\text{max}}$ is the maximum travel time index of all of the cells associated with the basin. The development of a travel time index is described in the next section.

The lagged rainfall excess for each cell is routed through a linear reservoir with the following equation:

$$O_i = \left[\frac{\Delta t}{R + 0.5 \Delta t} \right] I_{\text{avg}} + \left[1 - \frac{\Delta t}{R + 0.5 \Delta t} \right] O_{i-1} \quad (2)$$

where O_i is direct runoff at time i , R is the storage coefficient, I_{avg} is the average inflow for the interval $i-1$ to i , and Δt is the time interval.

CELL PARAMETERS

Part of the required input for the Modified Clark program is a cell-parameter file that contains the following information for each cell: cell x-coordinate, cell y-coordinate, area (within basin), and travel time index. As shown in the previous section, the travel time index for a cell is used to calculate a translation lag. The travel time from a cell to the basin outlet is

$$\tau = \frac{D}{V_{\text{avg}}} \quad (3)$$

where τ is the time-of-travel to the basin outlet, D is the length of the flow path to the basin outlet, and V_{avg} is the average velocity over the flow path. If it is assumed that travel velocity is constant for the basin, then flow path length can serve as the cell travel time index.

An alternative to the assumption of a constant travel velocity is to incorporate a spatially distributed velocity field, as proposed by Maidment *et al.* (1996).

The travel velocity through a cell is assumed to be proportional to the cell slope and to the accumulated area of all cells contributing runoff to the cell. That is,

$$v_{cell} \propto S^a * A^b \quad (4)$$

where v_{cell} is the travel velocity through a cell, S is the cell slope, and A is the accumulated area of contributing cells. The accumulated area can be regarded as a surrogate for depth. A value of 0.5 has been found to be reasonable for both the a and b exponents (Maidment *et al.*, 1996). The travel time index for a cell is then defined as the integral of l_{cell}/v_{cell} along the flow path to the basin outlet, where l_{cell} is the length of flow path through a cell. Incorporation of a spatially distributed velocity field in computing travel time indices is worthy of further study. However, for the purposes of this paper, the assumption of a constant average velocity over all the basin flow paths is adopted for an initial demonstration of the Modified Clark method.

Procedures for using a geographic information system (GIS) to calculate cell areas and travel time indices have been developed (HEC, 1995c). The procedures require processing digital elevation model (DEM) data such as are available for the continental U.S. (via Internet) from the USGS EROS Data Center (USGS, 1990). An eight-direction "pour-point" algorithm defines the direction of flow from any grid cell to be in the direction of steepest descent from the cell to one of its eight neighbors. A flow path length is computed by summing the lengths of all segments along the path from the cell to the basin outlet. Area and travel time index are determined for DEM-based cells at a 100 m resolution. Radar cells (based on the HRAP grid) are then superposed and their areas and travel time indices are calculated by summing the areas and averaging the travel time indices of the encompassed DEM-based cells. The cell areas and travel time indices are treated as constants for a given basin. Thus GIS is used for a one-time processing of data and is not required for subsequent application of the Modified Clark program.

LOSSES, BASEFLOW, AND HYDROLOGIC ROUTING

Loss models available in the Modified Clark program are Initial/Constant, SCS Curve Number, and Green and Ampt. The methods are applied as in the HEC-1 program (HEC, 1990). The loss model parameters apply to all cells in the basin, but losses are calculated individually for each cell based on the rainfall intensities associated with that cell. Baseflow is

modeled as in HEC-1. The starting flow, recession flow, and recession ratio parameters are used to calculate baseflow at the outlet of the basin.

The Modified Clark program can only simulate runoff from elemental basins – that is, basins that are not subdivided. However, the program has the capability to write its simulation results (i.e., discharge hydrographs) to the HEC-DSS. For applications with multi-subbasin watersheds, the hydrographs can be retrieved from HEC-DSS and routing performed with programs such as HEC-1, HEC1F (Peters and Ely, 1985), or UNET (HEC, 1993).

TEST WATERSHED

Runoff simulations were performed for the Illinois River watershed above Tenkiller Lake in northeastern Oklahoma and northwestern Arkansas. The 4,163 km² watershed was divided into four subbasins as shown in Figure 2. The subbasin areas and the number of radar cells in each subbasin are listed in Table 1. Stream gages are located at the outlets of subbasins 85, 86, and 113. Inflow to Tenkiller Lake can be computed from measured outflow and lake-level data. Figure 2 also shows the location of precipitation gages, for which hourly rainfall is available.

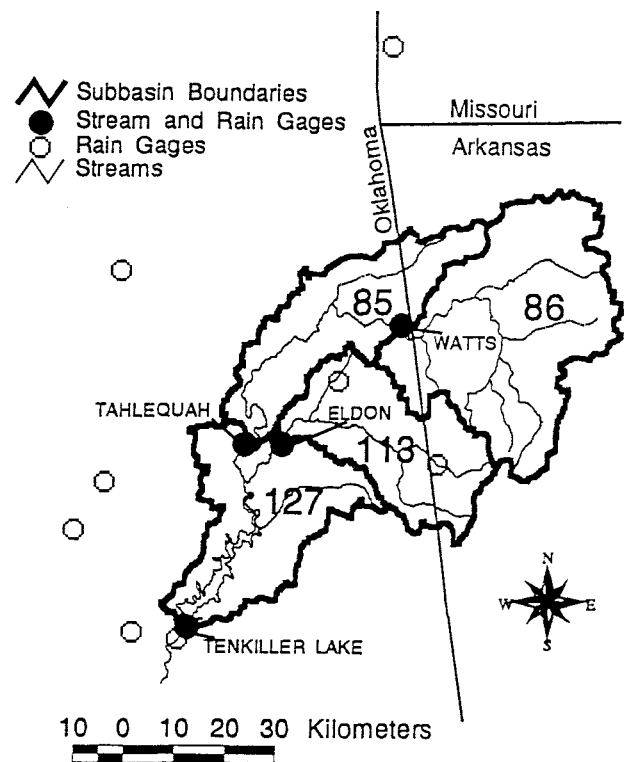


Figure 2. Illinois River Watershed.

TABLE 1. Subbasin Area and Number of Radar Cells.

Subbasin	Area (km ²)	Number of Radar Cells
85	829	84
86	1645	129
113	795	78
127	894	86

The watershed is in the Ozark Highlands and is heavily wooded. Elevations range from 140 meters above sea level at the outlet of Tenkiller Lake to 580 meters. The hills in the region are formed of porous limestone and overlain with cherty topsoil. The flood plains can be gravelly, and in places the substratum is too pervious to hold water. Therefore, high infiltration is expected (Soil Conservation Service, 1965 and 1970). For simplicity, the method of using an initial loss followed by a constant loss rate was adopted for calculating rainfall excess.

STORM EVENTS

Radar rainfall data for storms that occurred on November 4-5, 1994, January 13-14, 1995, and May 8, 1995, were used for the initial application of the Modified Clark method. Table 2 shows total average rainfall for each storm over the four subbasins as calculated using (a) Stage III radar data and (b) data from the precipitation gages shown in Figure 2. Total average rainfall from the gage data was calculated using an inverse distance-squared weighting procedure (HEC, 1989).

The total average precipitation calculated for each of the three storm events using gage data differs significantly from that calculated using radar data. Differences might be attributed to various factors, including the spatial variability of the rainfall, weighting of the gage data, the accuracy of the radar rainfall data, and associated processing procedures. While these are key issues with regard to rainfall measurement, their resolution is beyond the scope of this paper, which is intended to demonstrate use of the gridded rainfall data.

A time-area concentration histogram for subbasin 85 is shown in Figure 3. The histogram is based on the area and travel time index for each radar cell, and it shows the percent of the subbasin area that contributes runoff at the outlet (via translation) for increments of travel time (expressed as 10 percent increments of the time of concentration). A time-volume concentration histogram for the November

4-5, 1994, storm, which shows the percent of the total volume of rainfall that contributes runoff to the outlet for increments of travel time, is also shown in Figure 3. If the rainfall were distributed uniformly, the two histograms would be identical; the histograms differ because of spatial variations in rainfall. As shown, the time-volume histogram does not vary greatly from the time-area histogram. This was generally true for the three storm events over the Illinois River watershed. Conclusions about the time-space rainfall distribution cannot be made from these histograms because the hourly cell data have been integrated over time.

TABLE 2. Total Average Rainfall as Calculated Using Radar and Gage Rainfall Data.

Storm Event	Subbasin	Total Average Rainfall (radar) (mm)	Total Average Rainfall (gage) (mm)
November 4-5, 1994	85	93	74
November 4-5, 1994	86	90	55
November 4-5, 1994	113	98	118
November 4-5, 1994	127	92	133
January 13-14, 1995	85	91	51
January 13-14, 1995	86	94	44
January 13-14, 1995	113	81	55
January 13-14, 1995	127	66	75
May 8, 1995	85	57	37
May 8, 1995	86	56	31
May 8, 1995	113	58	39
May 8, 1995	127	62	81

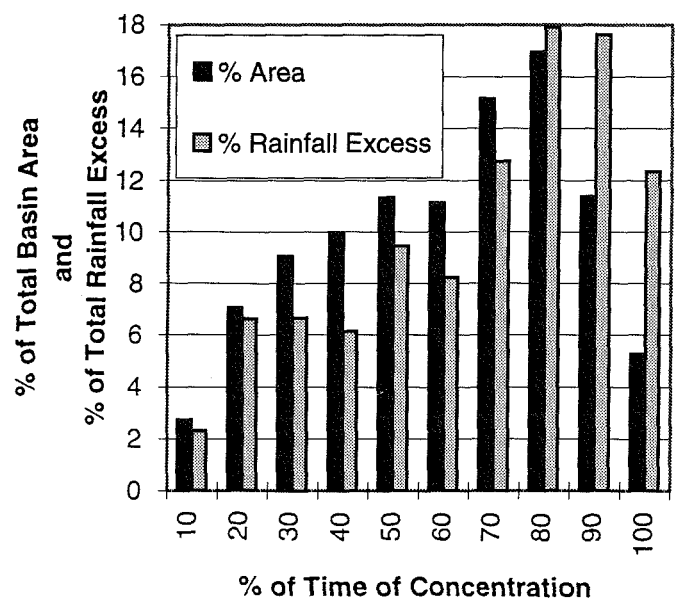


Figure 3. Time-Area and Time-Rainfall Volume Histograms for the November 4-5, 1994, Storm on Subbasin 85.

MODIFIED CLARK SIMULATION

Results of the Modified Clark runoff simulations at the Watts, Tahlequah, and Eldon gages and Tenkiller Lake for the November 4-5, 1994, January 13-14, 1995, and May 8, 1995, storms are shown in Figures 4, 5, and 6, respectively. Loss parameters were adjusted so that the volumes of observed and simulated runoff were essentially identical. The Clark (i.e., basin time-of-concentration and storage coefficient), loss, and baseflow parameters used in the simulations are shown in Table 3. Values for time-of-concentration and storage coefficient were kept constant for the simulations. Flow simulation at the Tahlequah gage station and Tenkiller Lake required stream routing of hydrographs generated at upstream locations. This was performed using the modified Puls method as implemented in HEC-1 (HEC, 1990) with storage-discharge criteria furnished by the Tulsa District of the Corps of Engineers.

As shown in Figures 4, 5, and 6, the simulated hydrographs provide a reasonable fit to the observed hydrographs. Simulations were also performed using spatially averaged radar-rainfall data. The results were similar to those based on grid-distributed rainfall. This is attributed to the uniformity of the rainfall distribution as discussed in the previous section. It is expected that with an application to a storm with marked spatial variability, such as a localized convective storm, a substantial difference would occur between simulations based on grid-distributed versus spatially-averaged rainfall. The difference would be due to both the grid-based calculation of losses as well as the grid-based translation of rainfall excess. Hypothetical data have been used to confirm this conclusion, but data have not been available for the watershed above Tenkiller Lake for such comparisons.

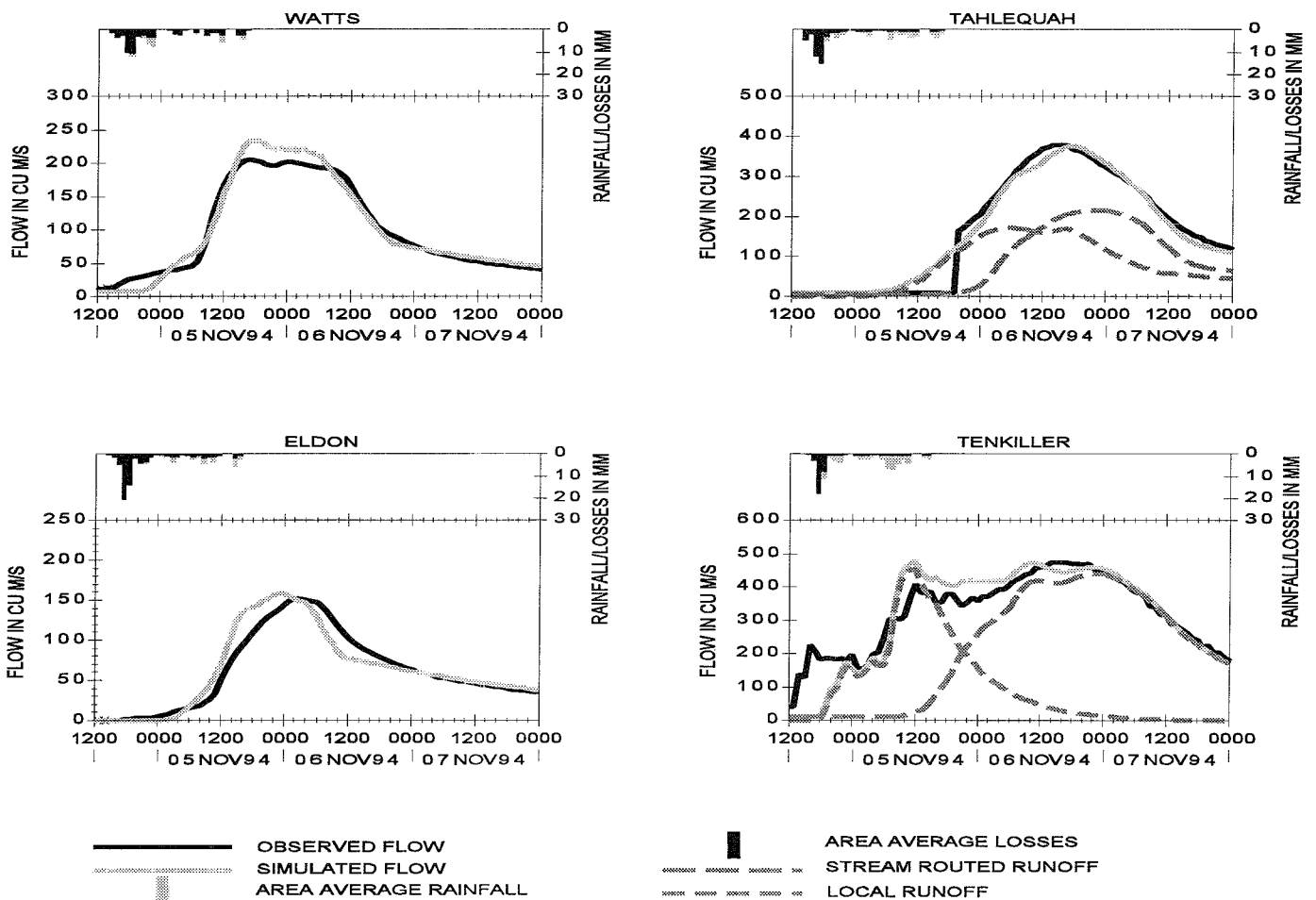


Figure 4. Modified Clark Rainfall-Runoff Simulations for the November 4-5, 1994, Storm.

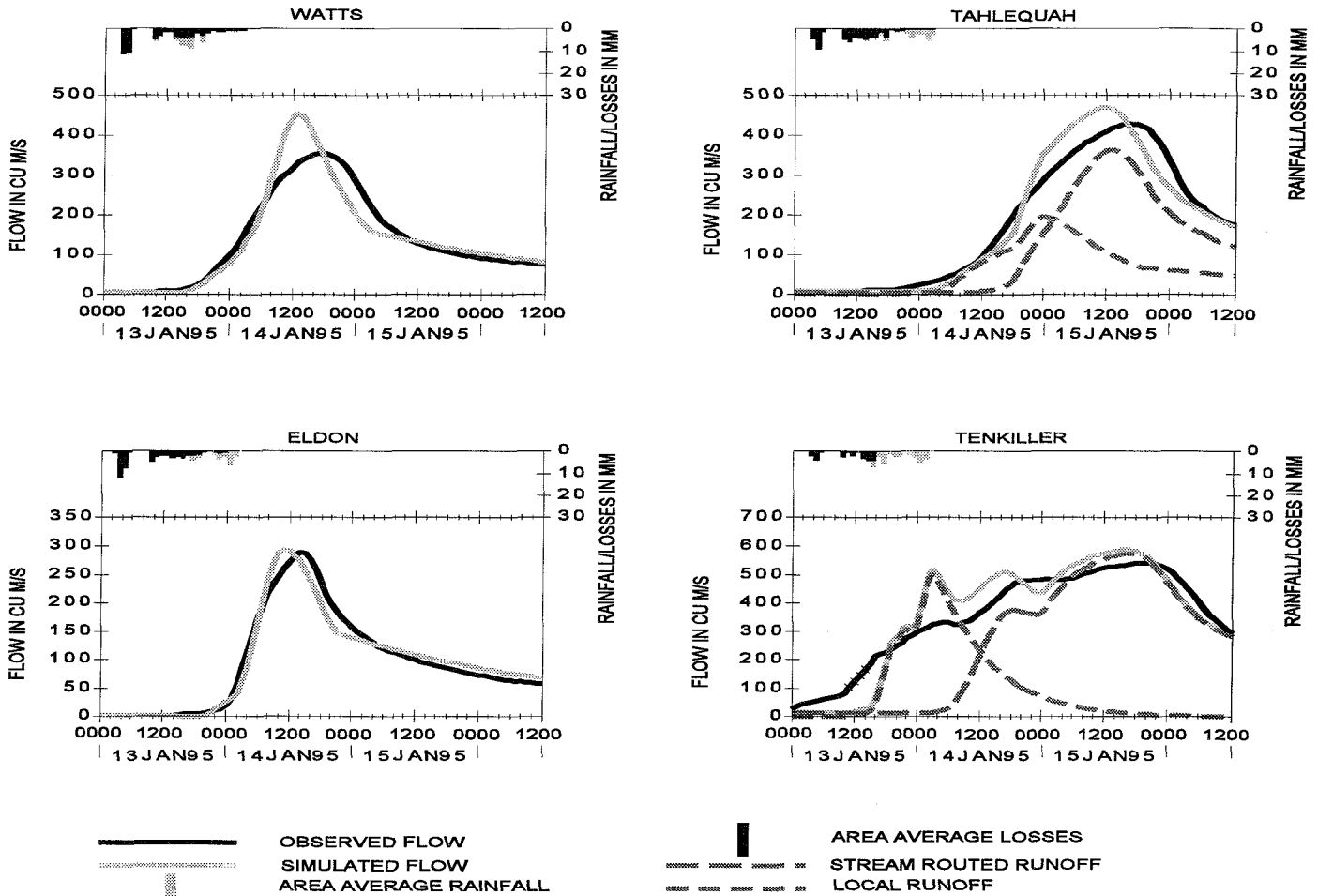


Figure 5. Modified Clark Rainfall-Runoff Simulations for the January 13-14, 1995, Storm.

CONCLUDING REMARKS

The availability of rainfall data from WSR-88D radars affords new opportunities for increasing the spatial detail with which rainfall-runoff processes are simulated. A simple method for simulating watershed runoff by using a linear transform of grid-distributed rainfall excess is described herein. Aside from cell properties (which can be obtained with GIS procedures), the data requirements for the Modified Clark method are essentially the same as for existing lumped-parameter models. The method thus provides a relatively straightforward transition to use of radar-rainfall data. As more physically based distributed models come into use, it may be useful to compare their performance, data requirements, and utility with a simpler approach such as that described herein.

ACKNOWLEDGMENTS

The writers acknowledge the contributions of the following HEC personnel: Art Pabst, for the object-oriented design of the Modified Clark software; Tom Evans, for implementing GIS procedures; and Carl Franke, for developing software to load radar rainfall data into HEC-DSS. Scott Boyd of the North Pacific Division, Corps of Engineers, performed the original coding of the Modified Clark software. Personnel of the Tulsa District, Corps of Engineers, provided watershed data, gage data, and HEC-1 parameter data for the Illinois River watershed.

LITERATURE CITED

- Clark, C. O., 1943. Storage and the Unit Hydrograph. *Transactions of the American Society of Civil Engineers* 110:1419-1446.
- Greene, D. R. and M. D. Hudlow, 1982 (Draft). *Hydrometeorologic Grid Mapping Procedures*. In: AWRA International Symposium on Hydrometeorology, Denver, Colorado.
- Hydrologic Engineering Center, 1989. *PRECIP User's Manual*. In: *Water Control Software Forecast and Operations*, Davis, California.

Runoff Simulation Using Radar Rainfall Data

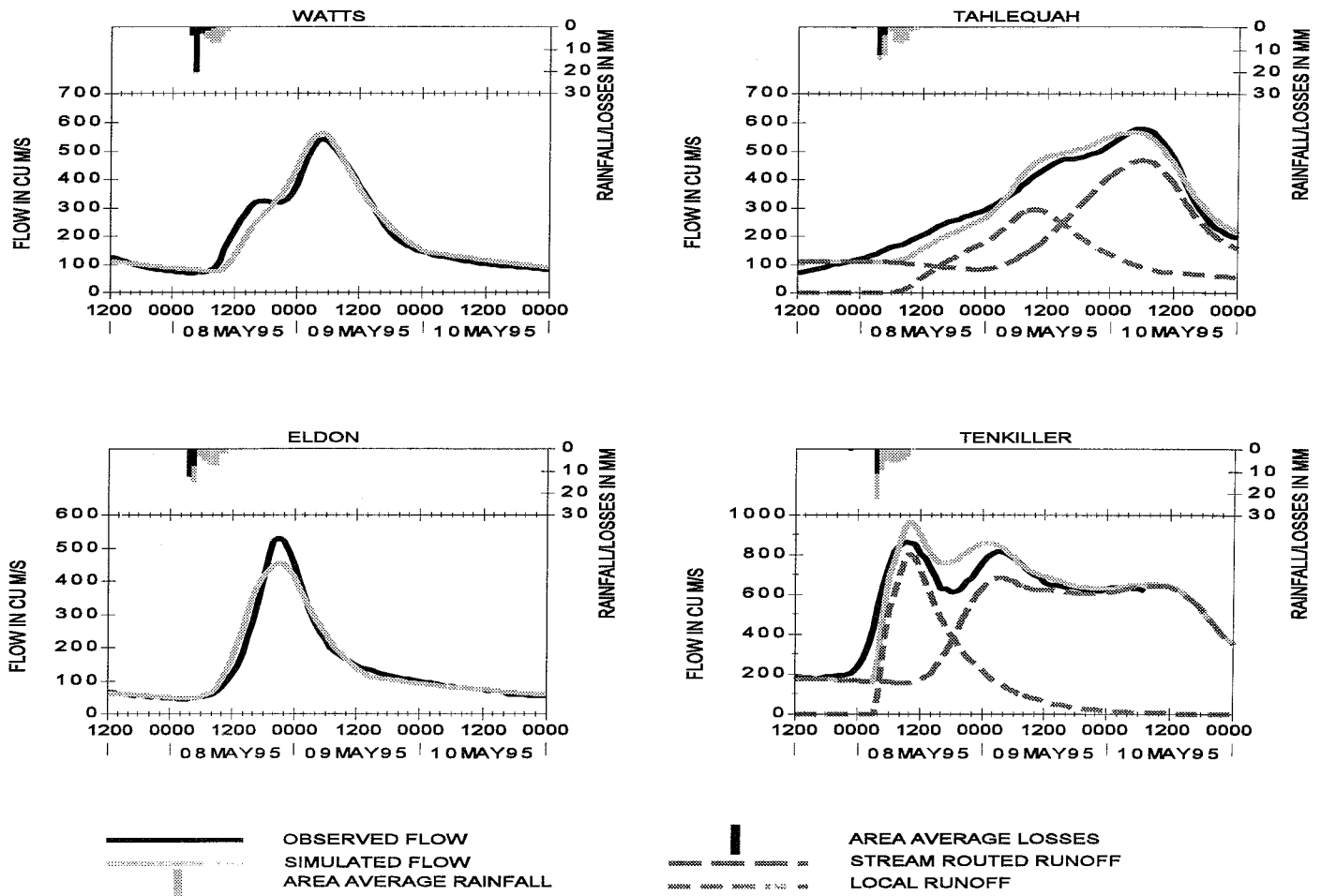


Figure 6. Modified Clark Rainfall-Runoff Simulations for the May 8, 1995, Storm.

TABLE 3. Modified Clark Model Parameters Used in Test Simulations.

Subbasin	Storm Event	Clark Parameters		Loss Parameters		Baseflow Parameters	
		Tc (hours)	R (hours)	Initial Loss (mm)	Constant Loss Rate (mm/hr)	Initial Flow (cu. m/s)	Recession Ratio*
85	November 4-5, 1994	30	15.5	62.3	1.3	1.4	1.02
	January 13-14, 1995	30	15.5	57.2	1.0	2.8	1.02
	May 8, 1995	30	15.5	17.5	0.0	0.0	1.02
86	November 4-5, 1994	24	11.6	69.9	3.6	8.5	1.02
	January 13-14, 1995	24	11.6	27.9	5.1	8.5	1.02
	May 8, 1995	24	11.6	30.2	0.0	113.0	1.02
113	November 4-5, 1994	16	9.7	92.7	1.8	1.4	1.02
	January 13-14, 1995	16	9.7	56.6	0.0	2.8	1.02
	May 8, 1995	16	9.7	21.1	0.0	65.1	1.02
127	November 4-5, 1994	1	10.0	32.0	1.5	0.0	1.00
	January 13-14, 1995	1	10.0	30.0	0.0	0.0	1.00
	May 8, 1995	1	10.0	12.7	0.0	0.0	1.00

*The ratio is that of the initial flow to the flow one hour later.

- Hydrologic Engineering Center, 1990. HEC-1 Flood Hydrograph Package User's Manual. Davis, California.
- Hydrologic Engineering Center, 1993. UNET One-Dimensional Unsteady Flow Through a Full Network of Open Channels User's Manual. Davis, California.
- Hydrologic Engineering Center, 1995a. Modified Clark (modClark) Runoff Simulation User's Manual. Davis, California.
- Hydrologic Engineering Center, 1995b. gridUtil User's Manual. Davis, California.
- Hydrologic Engineering Center, 1995c. GridParm - DEM2HRAP: A Procedure for Evaluating Runoff Parameters for HRAP Cells from USGS Digital Elevation Models. Davis, California.
- Maidment, D. R., J. F. Olivera, A. Calver, A., A. Eatherall, and W. Fraczek, 1996. A Unit Hydrograph Derived From a Spatially Distributed Velocity Field. *Hydrological Processes* 10(6).
- Peters, J. and P. Ely, 1985. Flood-Runoff Forecasting with HEC1F. *Water Resources Bulletin* 21(1):7-13.
- Shedd, R. C. and R. A. Fulton, 1993. WSR-88D Precipitation Processing and its Use in National Weather Service Hydrologic Forecasting. *In: Engineering Hydrology*, Chin Y. Kuo (Editor). American Society of Civil Engineers, New York, New York, pp. 844-849.
- Soil Conservation Service, 1965. Soil Survey, Adair County, Oklahoma. Washington, D.C.
- Soil Conservation Service, 1970. Soil Survey, Cherokee and Delaware Counties, Oklahoma. Washington, D.C.
- Unidata Program Center, 1991. NetCDF User's Guide, An Interface for Data Access, Version 2.0. Boulder, Colorado.
- United States Geological Survey, 1990. Digital Elevation Models, Data Users Guide 5. Reston, Virginia.

Technical Paper Series

TP-1	Use of Interrelated Records to Simulate Streamflow	TP-39	A Method for Analyzing Effects of Dam Failures in Design Studies
TP-2	Optimization Techniques for Hydrologic Engineering	TP-40	Storm Drainage and Urban Region Flood Control Planning
TP-3	Methods of Determination of Safe Yield and Compensation Water from Storage Reservoirs	TP-41	HEC-5C, A Simulation Model for System Formulation and Evaluation
TP-4	Functional Evaluation of a Water Resources System	TP-42	Optimal Sizing of Urban Flood Control Systems
TP-5	Streamflow Synthesis for Ungaged Rivers	TP-43	Hydrologic and Economic Simulation of Flood Control Aspects of Water Resources Systems
TP-6	Simulation of Daily Streamflow	TP-44	Sizing Flood Control Reservoir Systems by System Analysis
TP-7	Pilot Study for Storage Requirements for Low Flow Augmentation	TP-45	Techniques for Real-Time Operation of Flood Control Reservoirs in the Merrimack River Basin
TP-8	Worth of Streamflow Data for Project Design - A Pilot Study	TP-46	Spatial Data Analysis of Nonstructural Measures
TP-9	Economic Evaluation of Reservoir System Accomplishments	TP-47	Comprehensive Flood Plain Studies Using Spatial Data Management Techniques
TP-10	Hydrologic Simulation in Water-Yield Analysis	TP-48	Direct Runoff Hydrograph Parameters Versus Urbanization
TP-11	Survey of Programs for Water Surface Profiles	TP-49	Experience of HEC in Disseminating Information on Hydrological Models
TP-12	Hypothetical Flood Computation for a Stream System	TP-50	Effects of Dam Removal: An Approach to Sedimentation
TP-13	Maximum Utilization of Scarce Data in Hydrologic Design	TP-51	Design of Flood Control Improvements by Systems Analysis: A Case Study
TP-14	Techniques for Evaluating Long-Term Reservoir Yields	TP-52	Potential Use of Digital Computer Ground Water Models
TP-15	Hydrostatistics - Principles of Application	TP-53	Development of Generalized Free Surface Flow Models Using Finite Element Techniques
TP-16	A Hydrologic Water Resource System Modeling Techniques	TP-54	Adjustment of Peak Discharge Rates for Urbanization
TP-17	Hydrologic Engineering Techniques for Regional Water Resources Planning	TP-55	The Development and Servicing of Spatial Data Management Techniques in the Corps of Engineers
TP-18	Estimating Monthly Streamflows Within a Region	TP-56	Experiences of the Hydrologic Engineering Center in Maintaining Widely Used Hydrologic and Water Resource Computer Models
TP-19	Suspended Sediment Discharge in Streams	TP-57	Flood Damage Assessments Using Spatial Data Management Techniques
TP-20	Computer Determination of Flow Through Bridges	TP-58	A Model for Evaluating Runoff-Quality in Metropolitan Master Planning
TP-21	An Approach to Reservoir Temperature Analysis	TP-59	Testing of Several Runoff Models on an Urban Watershed
TP-22	A Finite Difference Methods of Analyzing Liquid Flow in Variably Saturated Porous Media	TP-60	Operational Simulation of a Reservoir System with Pumped Storage
TP-23	Uses of Simulation in River Basin Planning	TP-61	Technical Factors in Small Hydropower Planning
TP-24	Hydroelectric Power Analysis in Reservoir Systems	TP-62	Flood Hydrograph and Peak Flow Frequency Analysis
TP-25	Status of Water Resource System Analysis	TP-63	HEC Contribution to Reservoir System Operation
TP-26	System Relationships for Panama Canal Water Supply	TP-64	Determining Peak-Discharge Frequencies in an Urbanizing Watershed: A Case Study
TP-27	System Analysis of the Panama Canal Water Supply	TP-65	Feasibility Analysis in Small Hydropower Planning
TP-28	Digital Simulation of an Existing Water Resources System	TP-66	Reservoir Storage Determination by Computer Simulation of Flood Control and Conservation Systems
TP-29	Computer Application in Continuing Education	TP-67	Hydrologic Land Use Classification Using LANDSAT
TP-30	Drought Severity and Water Supply Dependability	TP-68	Interactive Nonstructural Flood-Control Planning
TP-31	Development of System Operation Rules for an Existing System by Simulation	TP-69	Critical Water Surface by Minimum Specific Energy Using the Parabolic Method
TP-32	Alternative Approaches to Water Resources System Simulation		
TP-33	System Simulation of Integrated Use of Hydroelectric and Thermal Power Generation		
TP-34	Optimizing flood Control Allocation for a Multipurpose Reservoir		
TP-35	Computer Models for Rainfall-Runoff and River Hydraulic Analysis		
TP-36	Evaluation of Drought Effects at Lake Atitlan		
TP-37	Downstream Effects of the Levee Overtopping at Wilkes-Barre, PA, During Tropical Storm Agnes		
TP-38	Water Quality Evaluation of Aquatic Systems		

- TP-70 Corps of Engineers Experience with Automatic Calibration of a Precipitation-Runoff Model
- TP-71 Determination of Land Use from Satellite Imagery for Input to Hydrologic Models
- TP-72 Application of the Finite Element Method to Vertically Stratified Hydrodynamic Flow and Water Quality
- TP-73 Flood Mitigation Planning Using HEC-SAM
- TP-74 Hydrographs by Single Linear Reservoir Model
- TP-75 HEC Activities in Reservoir Analysis
- TP-76 Institutional Support of Water Resource Models
- TP-77 Investigation of Soil Conservation Service Urban Hydrology Techniques
- TP-78 Potential for Increasing the Output of Existing Hydroelectric Plants
- TP-79 Potential Energy and Capacity Gains from Flood Control Storage Reallocation at Existing U.S. Hydropower Reservoirs
- TP-80 Use of Non-Sequential Techniques in the Analysis of Power Potential at Storage Projects
- TP-81 Data Management Systems of Water Resources Planning
- TP-82 The New HEC-1 Flood Hydrograph Package
- TP-83 River and Reservoir Systems Water Quality Modeling Capability
- TP-84 Generalized Real-Time Flood Control System Model
- TP-85 Operation Policy Analysis: Sam Rayburn Reservoir
- TP-86 Training the Practitioner: The Hydrologic Engineering Center Program
- TP-87 Documentation Needs for Water Resources Models
- TP-88 Reservoir System Regulation for Water Quality Control
- TP-89 A Software System to Aid in Making Real-Time Water Control Decisions
- TP-90 Calibration, Verification and Application of a Two-Dimensional Flow Model
- TP-91 HEC Software Development and Support
- TP-92 Hydrologic Engineering Center Planning Models
- TP-93 Flood Routing Through a Flat, Complex Flood Plain Using a One-Dimensional Unsteady Flow Computer Program
- TP-94 Dredged-Material Disposal Management Model
- TP-95 Infiltration and Soil Moisture Redistribution in HEC-1
- TP-96 The Hydrologic Engineering Center Experience in Nonstructural Planning
- TP-97 Prediction of the Effects of a Flood Control Project on a Meandering Stream
- TP-98 Evolution in Computer Programs Causes Evolution in Training Needs: The Hydrologic Engineering Center Experience
- TP-99 Reservoir System Analysis for Water Quality
- TP-100 Probable Maximum Flood Estimation - Eastern United States
- TP-101 Use of Computer Program HEC-5 for Water Supply Analysis
- TP-102 Role of Calibration in the Application of HEC-6
- TP-103 Engineering and Economic Considerations in Formulating
- TP-104 Modeling Water Resources Systems for Water Quality
- TP-105 Use of a Two-Dimensional Flow Model to Quantify Aquatic Habitat
- TP-106 Flood-Runoff Forecasting with HEC-1F
- TP-107 Dredged-Material Disposal System Capacity Expansion
- TP-108 Role of Small Computers in Two-Dimensional Flow Modeling
- TP-109 One-Dimensional Model for Mud Flows
- TP-110 Subdivision Froude Number
- TP-111 HEC-5Q: System Water Quality Modeling
- TP-112 New Developments in HEC Programs for Flood Control
- TP-113 Modeling and Managing Water Resource Systems for Water Quality
- TP-114 Accuracy of Computer Water Surface Profiles - Executive Summary
- TP-115 Application of Spatial-Data Management Techniques in Corps Planning
- TP-116 The HEC's Activities in Watershed Modeling
- TP-117 HEC-1 and HEC-2 Applications on the Microcomputer
- TP-118 Real-Time Snow Simulation Model for the Monongahela River Basin
- TP-119 Multi-Purpose, Multi-Reservoir Simulation on a PC
- TP-120 Technology Transfer of Corps' Hydrologic Models
- TP-121 Development, Calibration and Application of Runoff Forecasting Models for the Allegheny River Basin
- TP-122 The Estimation of Rainfall for Flood Forecasting Using Radar and Rain Gage Data
- TP-123 Developing and Managing a Comprehensive Reservoir Analysis Model
- TP-124 Review of U.S. Army corps of Engineering Involvement With Alluvial Fan Flooding Problems
- TP-125 An Integrated Software Package for Flood Damage Analysis
- TP-126 The Value and Depreciation of Existing Facilities: The Case of Reservoirs
- TP-127 Floodplain-Management Plan Enumeration
- TP-128 Two-Dimensional Floodplain Modeling
- TP-129 Status and New Capabilities of Computer Program HEC-6: "Scour and Deposition in Rivers and Reservoirs"
- TP-130 Estimating Sediment Delivery and Yield on Alluvial Fans
- TP-131 Hydrologic Aspects of Flood Warning - Preparedness Programs
- TP-132 Twenty-five Years of Developing, Distributing, and Supporting Hydrologic Engineering Computer Programs
- TP-133 Predicting Deposition Patterns in Small Basins
- TP-134 Annual Extreme Lake Elevations by Total Probability Theorem
- TP-135 A Muskingum-Cunge Channel Flow Routing Method for Drainage Networks
- TP-136 Prescriptive Reservoir System Analysis Model - Missouri River System Application
- TP-137 A Generalized Simulation Model for Reservoir System Analysis
- TP-138 The HEC NexGen Software Development Project
- TP-139 Issues for Applications Developers
- TP-140 HEC-2 Water Surface Profiles Program
- TP-141 HEC Models for Urban Hydrologic Analysis

- TP-142 Systems Analysis Applications at the Hydrologic Engineering Center
- TP-143 Runoff Prediction Uncertainty for Ungauged Agricultural Watersheds
- TP-144 Review of GIS Applications in Hydrologic Modeling
- TP-145 Application of Rainfall-Runoff Simulation for Flood Forecasting
- TP-146 Application of the HEC Prescriptive Reservoir Model in the Columbia River Systems
- TP-147 HEC River Analysis System (HEC-RAS)
- TP-148 HEC-6: Reservoir Sediment Control Applications
- TP-149 The Hydrologic Modeling System (HEC-HMS): Design and Development Issues
- TP-150 The HEC Hydrologic Modeling System
- TP-151 Bridge Hydraulic Analysis with HEC-RAS
- TP-152 Use of Land Surface Erosion Techniques with Stream Channel Sediment Models
- TP-153 Risk-Based Analysis for Corps Flood Project Studies - A Status Report
- TP-154 Modeling Water-Resource Systems for Water Quality Management
- TP-155 Runoff simulation Using Radar Rainfall Data
- TP-156 Status of HEC Next Generation Software Development
- TP-157 Unsteady Flow Model for Forecasting Missouri and Mississippi Rivers
- TP-158 Corps Water Management System (CWMS)
- TP-159 Some History and Hydrology of the Panama Canal
- TP-160 Application of Risk-Based Analysis to Planning Reservoir and Levee Flood Damage Reduction Systems
- TP-161 Corps Water Management System - Capabilities and Implementation Status

