



**US Army Corps  
of Engineers**

Hydrologic Engineering Center

---

# **Corps Water Management System (CWMS)**

**June 2000**

# REPORT DOCUMENTATION PAGE

Form Approved OMB No. 0704-0188

The public reporting burden for this collection of information is estimated to average 1 hour per response, including the time for reviewing instructions, searching existing data sources, gathering and maintaining the data needed, and completing and reviewing the collection of information. Send comments regarding this burden estimate or any other aspect of this collection of information, including suggestions for reducing this burden, to the Department of Defense, Executive Services and Communications Directorate (0704-0188). Respondents should be aware that notwithstanding any other provision of law, no person shall be subject to any penalty for failing to comply with a collection of information if it does not display a currently valid OMB control number.

**PLEASE DO NOT RETURN YOUR FORM TO THE ABOVE ORGANIZATION.**

<b>1. REPORT DATE</b> (DD-MM-YYYY) June 2000		<b>2. REPORT TYPE</b> Technical Paper		<b>3. DATES COVERED</b> (From - To)	
<b>4. TITLE AND SUBTITLE</b> Corps Water Management System (CWMS)				<b>5a. CONTRACT NUMBER</b>	
				<b>5b. GRANT NUMBER</b>	
				<b>5c. PROGRAM ELEMENT NUMBER</b>	
<b>6. AUTHOR(S)</b> Arthur F. Pabst				<b>5d. PROJECT NUMBER</b>	
				<b>5e. TASK NUMBER</b>	
				<b>5f. WORK UNIT NUMBER</b>	
<b>7. PERFORMING ORGANIZATION NAME(S) AND ADDRESS(ES)</b> US Army Corps of Engineers Institute for Water Resources Hydrologic Engineering Center (HEC) 609 Second Street Davis, CA 95616-4687				<b>8. PERFORMING ORGANIZATION REPORT NUMBER</b> TP-158	
<b>9. SPONSORING/MONITORING AGENCY NAME(S) AND ADDRESS(ES)</b>				<b>10. SPONSOR/ MONITOR'S ACRONYM(S)</b>	
				<b>11. SPONSOR/ MONITOR'S REPORT NUMBER(S)</b>	
<b>12. DISTRIBUTION / AVAILABILITY STATEMENT</b> Approved for public release; distribution is unlimited.					
<b>13. SUPPLEMENTARY NOTES</b> Presented at Watershed Management & Operations Management 2000, Colorado State University, Fort Collins, Colorado, 20-24 June 2000.					
<b>14. ABSTRACT</b> As part of its Civil works mission, the US Army Corps of Engineers designs, builds and operates a variety of water resources projects. Projects include multi-use storage reservoirs, navigation dams and locks, and levee systems with closure structures. Corps Emergency Operations often include re-enforcing or raising levees, sandbagging efforts, and evacuation during flooding. The Corps Water Management System (CWMS) I sued to acquire real-time data on watershed conditions, develop forecasts of project inflows and uncontrolled flows below projects, determine project releases, and evaluate impacts. These tools provide critical information to Corps water managers to make informed engineering decisions under a variety of routine and emergency conditions. An overall description of the modernization project is given, including a discussion of improved spatially disturbed rainfall runoff modeling, reservoir operation modeling, steady and unsteady flow hydraulic routing, inundated area determination, and flow/stage impact analysis.					
<b>15. SUBJECT TERMS</b> water management, hydrology, data acquisition, reservoir operations, flow forecasting, flood impacts, flood inundation					
<b>16. SECURITY CLASSIFICATION OF:</b>			<b>17. LIMITATION OF ABSTRACT</b> UU	<b>18. NUMBER OF PAGES</b> 20	<b>19a. NAME OF RESPONSIBLE PERSON</b>
<b>a. REPORT</b> U	<b>b. ABSTRACT</b> U	<b>c. THIS PAGE</b> U			<b>19b. TELEPHONE NUMBER</b>

# Corps Water Management System (CWMS)

**June 2000**

US Army Corps of Engineers  
Institute for Water Resources  
Hydrologic Engineering Center  
609 Second Street  
Davis, CA 95616

(530) 756-1104  
(530) 756-8250 FAX  
[www.hec.usace.army.mil](http://www.hec.usace.army.mil)

TP-158

Papers in this series have resulted from technical activities of the Hydrologic Engineering Center. Versions of some of these have been published in technical journals or in conference proceedings. The purpose of this series is to make the information available for use in the Center's training program and for distribution with the Corps of Engineers.

The findings in this report are not to be construed as an official Department of the Army position unless so designated by other authorized documents.

The contents of this report are not to be used for advertising, publication, or promotional purposes. Citation of trade names does not constitute an official endorsement or approval of the use of such commercial products.

# Corps Water Management System (CWMS)

## Modernization Project Conceptual Overview

Arthur F. Pabst, Technical Project Manager,  
Hydrologic Engineering Center, Davis, California

### I - Background

As part of its Civil Works mission the US Army, Corps of Engineers designs, builds and operates a variety of water resource projects. Projects include, for example, multi-user storage reservoirs, navigation dams and locks, and levee systems with closure structures. Corps Emergency Operations often include re-enforcing or raising levees, sandbagging efforts, and evacuation during flooding. The Corps Water Management System (CWMS) is used to acquire real-time data on watershed conditions, develop forecasts of project inflows and uncontrolled flows below projects, determine project releases, and evaluate impacts. These tools provide

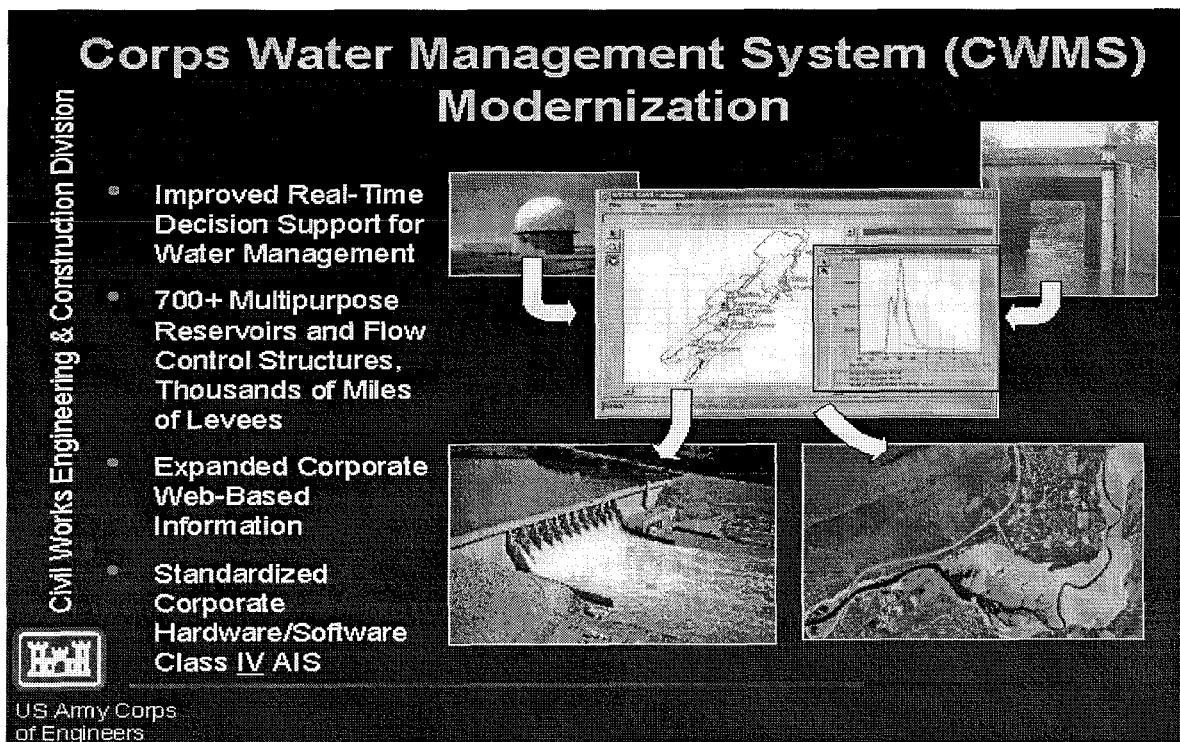


Figure 1 Corps Water Management System (CWMS) concepts.

critical information to Corps water managers to make informed engineering decisions under a variety of routine and emergency conditions. Corps water managers work in close coordination with other Federal (i.e., NWS, USBR, FEMA) , state, and local water and emergency management, organizations to carry out their mission responsibilities.

The CWMS is currently undergoing a major modernization effort to incorporate state-of-the-art hydrologic modeling techniques, real-time data processing, decision support tools and network based information dissemination. An overall description of the modernization project is given. This includes a discussion of improved spatially distributed rainfall runoff modeling, reservoir operation modeling, steady and unsteady flow hydraulic routing, inundated area determination, and flow/stage impact analysis. Concepts of this modeling system are presented. Application of this new technology to a specific test area will be given in another paper.

## **II - Scope**

The CWMS encompasses steps in the water management process starting from the receipt of environmental and project data, through the modeling of system response and decision support analysis, ending with the dissemination of data and decision results. The incoming real time data include river stage, reservoir elevation, gage precipitation, WSR-88D spatial precipitation, quantitative precipitation forecasts (QPF) and other hydro-meteorological parameters. These data are used to derive the hydrologic response throughout a watershed area, including short-term future reservoir inflows and local uncontrolled downstream flows. The flows are then used by the reservoir operation model to provide proposed releases to meet reservoir and downstream operation goals. Then, based on the total expected flows in the river system, river profiles may be determined, inundated areas may be mapped, and flood impacts may be analyzed. The CWMS allows the water manager to evaluate any number of operation alternatives before coming to the final decision. For example, various alternative future precipitation amounts may be considered, hydrologic response may be altered, reservoir release rules may be investigated, bridge, levee or other river conditions may be evaluated. When an operation decision is made the results, along with supporting environmental data may be disseminated to others via web technology.

The system emphasizes visualization of information in time and space. The primary CWMS user interface is map based to provide clear spatial reference for watershed and modeling information. CorpsView, a Corps developed spatial visualization tool based on commercially available GIS software, provides a direct user interface to GIS products and associated spatial attribute information.

### III - Components

Figure 2 shows the major components of the CWMS (counter clockwise from upper left): Data Acquisition (DA), Data Base (DB), Modeling, Control and Visualization Interface (CAVI), Data Dissemination (DD). These components have been developed in a network client-server architecture, permitting each component of the system to be hosted on one or more different hardware platforms. The current server side equipment is Sun Solaris and the client side can be fielded on Windows NT or Sun Solaris. The major portion of the product is written in Java, with Fortran, and C++ used for certain of the model computations.

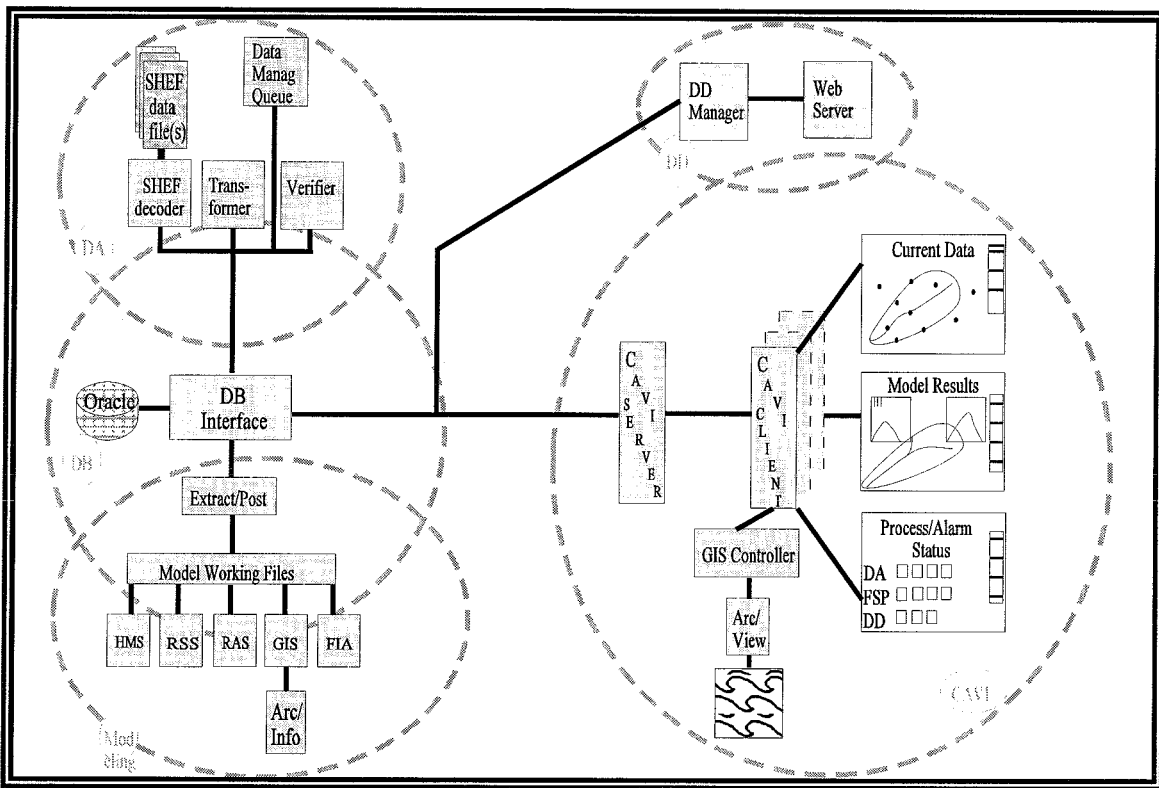
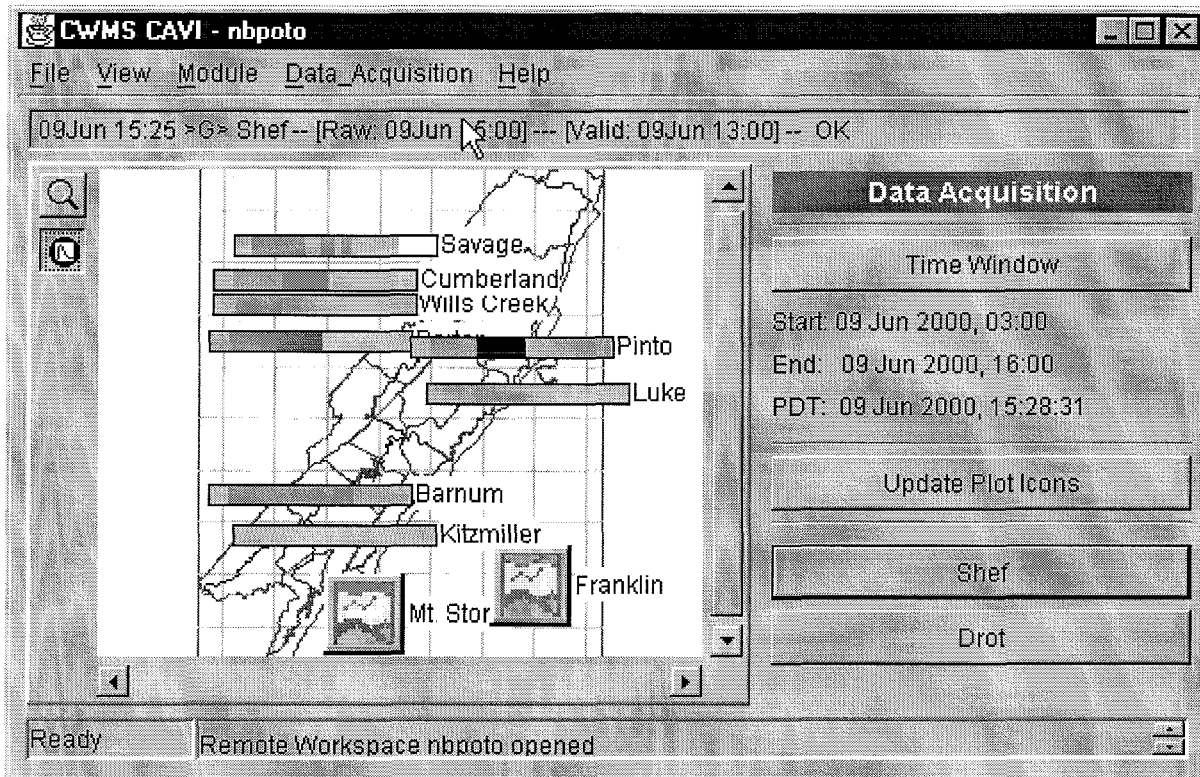


Figure 2 CWMS Components

**Data Acquisition** - The Data Acquisition(DA) component is responsible for ingesting data from any of the supported data sources. Currently, the primary data streams processed in the Corps are GOES Data Collection Platform (DCP) and National Weather Service SHEF. These and other formatted data may be processed as it is received via FTP or other file transfers, or via point-to-point network socket connections. Either type data is written directly to permanent storage and is then operated upon by the data acquisition software. Two levels of data screening may be performed. "On-the-fly" screening uses only simple magnitude and range checks. The second level of screening can perform tests that consider the rate of change of variables, comparison with neighboring stations, and other statistical tests. The DA component is also responsible for the derivation of secondary parameters. Typical derivations include: reservoir pool elevation to reservoir storage, river stage to flow, and accumulative precipitation to incremental precipitation. All data are stored in the data base during its processing by the DA components.

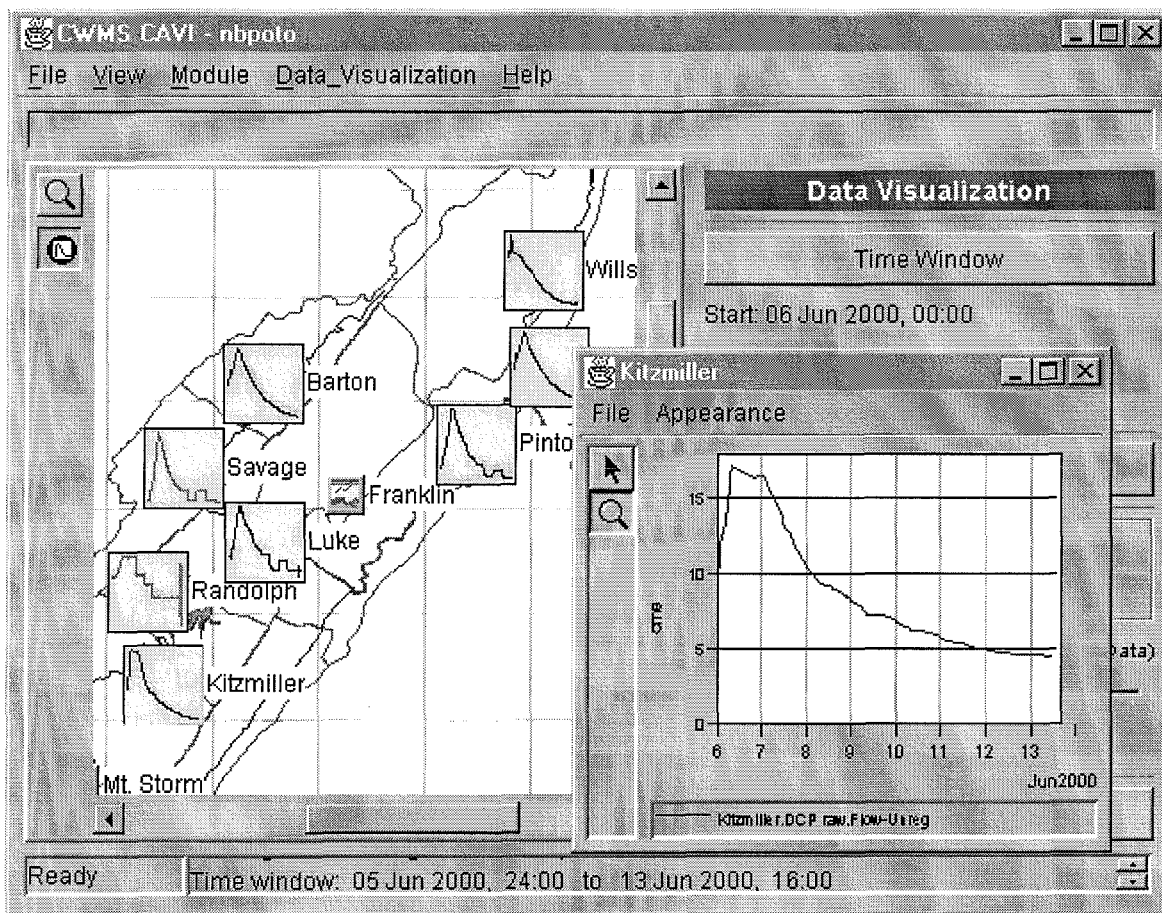


**Figure 3** Sample Data Acquisition Status Screen.



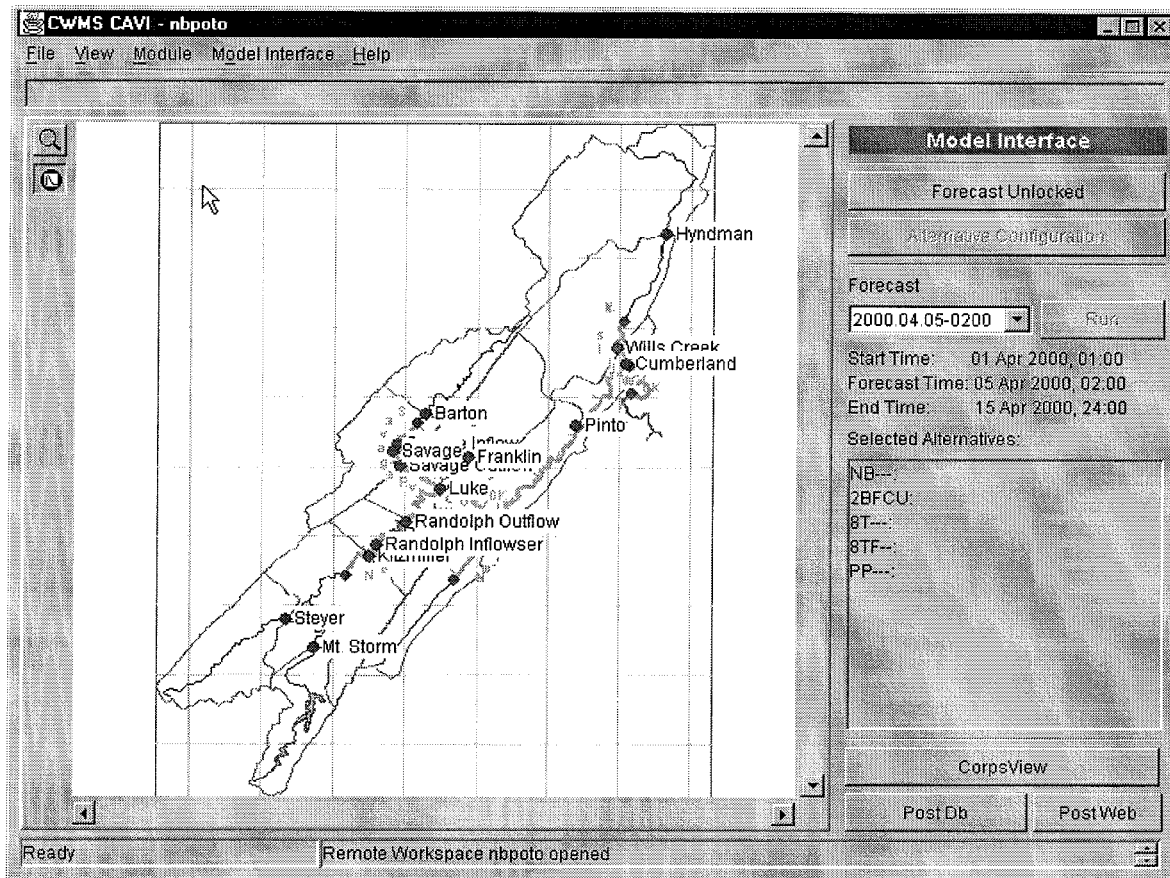
**Data Base** - The Data base (DB) component provides permanent data storage for the system. It is responsible for the management of all data received from the data streams and all data generated as derive and modeling operations are performed. All data written to or read from the data base are controlled by the Data Base Interface (DBI). The DBI provides a single image view of data that is used in the many components of CWMS. All data in the database are stored in Coordinated Universal Time (UTC) in System International (SI) units. Activities requesting data from the DBI receive the information in any units they desire. In all cases time remains in UTC and the application is responsible for displaying the time correctly in the users local time zone. The consistent use of UTC resolves issues where data crosses time zones and the problematic semiannual shifting between standard and daylight time.

Figure 4 shows thumbnail plots of river status for several locations.



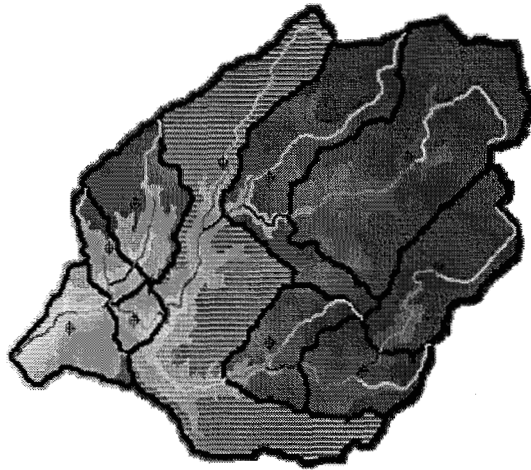
**Figure 4** Thumbnail plots of river stage data.

**Modeling** - The modeling component is responsible for the specification of model alternatives, the execution of model runs, and the display and interpretation of analysis results. The model suite includes precipitation input preparation, hydrologic response modeling, reservoir operation modeling, steady and unsteady flow river profile analysis, inundated area determination, and flood impact analysis. At a user specified forecast time, data pertinent to a watershed area is extracted from the data base and placed in a modeling sub-database. This sub-database is then the source and destination for all model runs and all the alternatives that are evaluated. At completion of the analysis the final operation alternative results are posted back to the master data base for dissemination. The sub-database, the related model parameters, and specific model output and log files can be saved to off-line storage to serve as a complete record of the analysis performed to support the decision process.

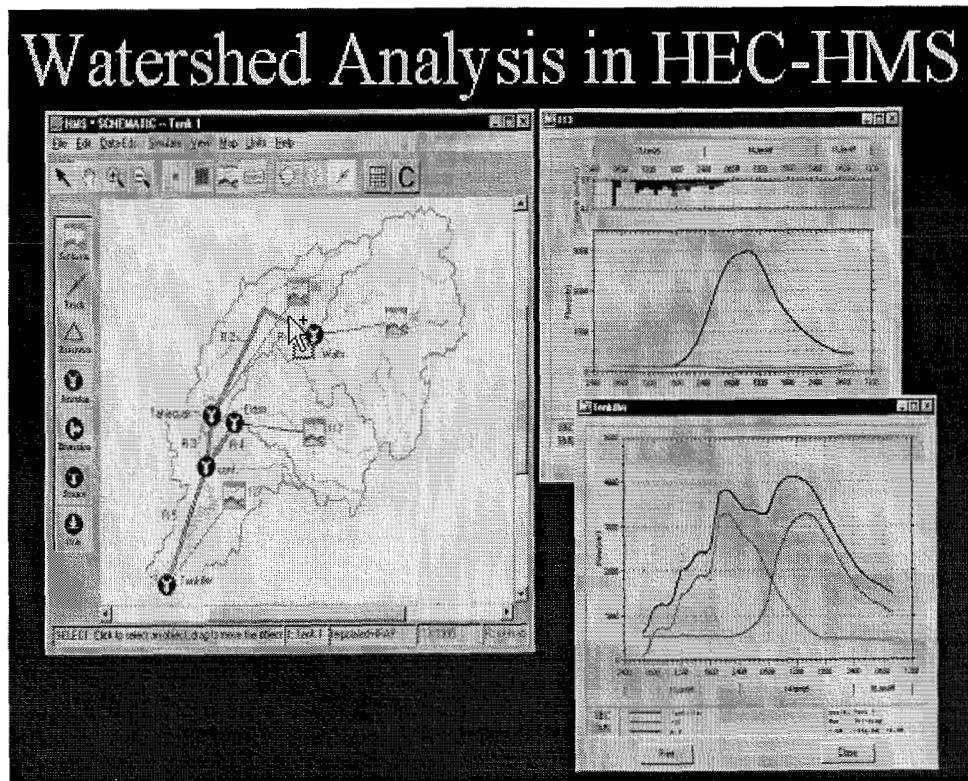


**Figure 5** CAVI - Model Interface Screen.

Hydrologic modeling - The hydrologic response of the watershed is modeled using spatially distributed precipitation. The HEC-HMS accepts gridded precipitation from both radar and point precipitation gage sources. Digital Elevation Model (DEM) data is used to develop model parameters. Runoff excess from each grid cell is determined and is routed using the Modified Clark procedure to provide runoff at the sub-basin outlet. Sub-basin hydrographs are then routed down through the channel network to develop flow into reservoirs, and local flow at downstream locations.

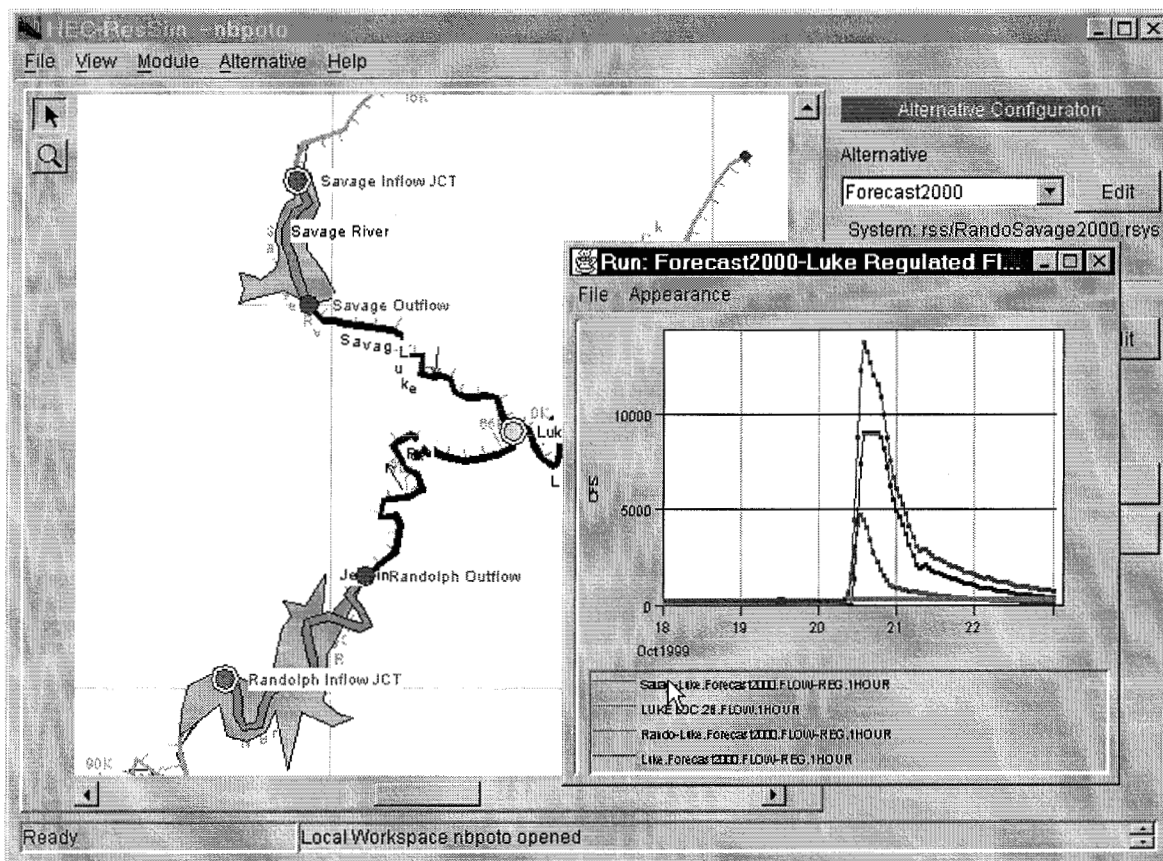


**Figure 6** Geo-Spatial defined basin characteristics



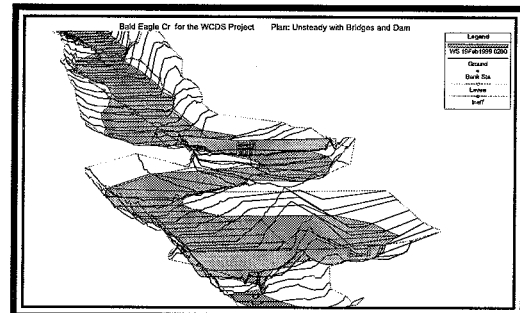
**Figure 7** HMS Model schematic and typical model results.

Reservoir modeling - The analysis of reservoir operations is performed using HEC-ResSim. This newly developed reservoir simulation program determines project releases based on a set of user supplied operation rules. This rule-based approach allows good flexibility in describing desired behavior for individual reservoirs operating for multiple local and downstream goals, as well as when reservoirs must operate as a system. The reservoir model uses inflows generated from the hydrologic model runs. Initial pool elevation, its corresponding reservoir storage and known project releases must be available to properly initialize the model. In cases where different rules lead to a conflict in determining releases, a rule priority is used to resolve the conflict. The determined releases are then combined with local uncontrolled flows from the hydrologic model to provide total flows throughout the watershed.

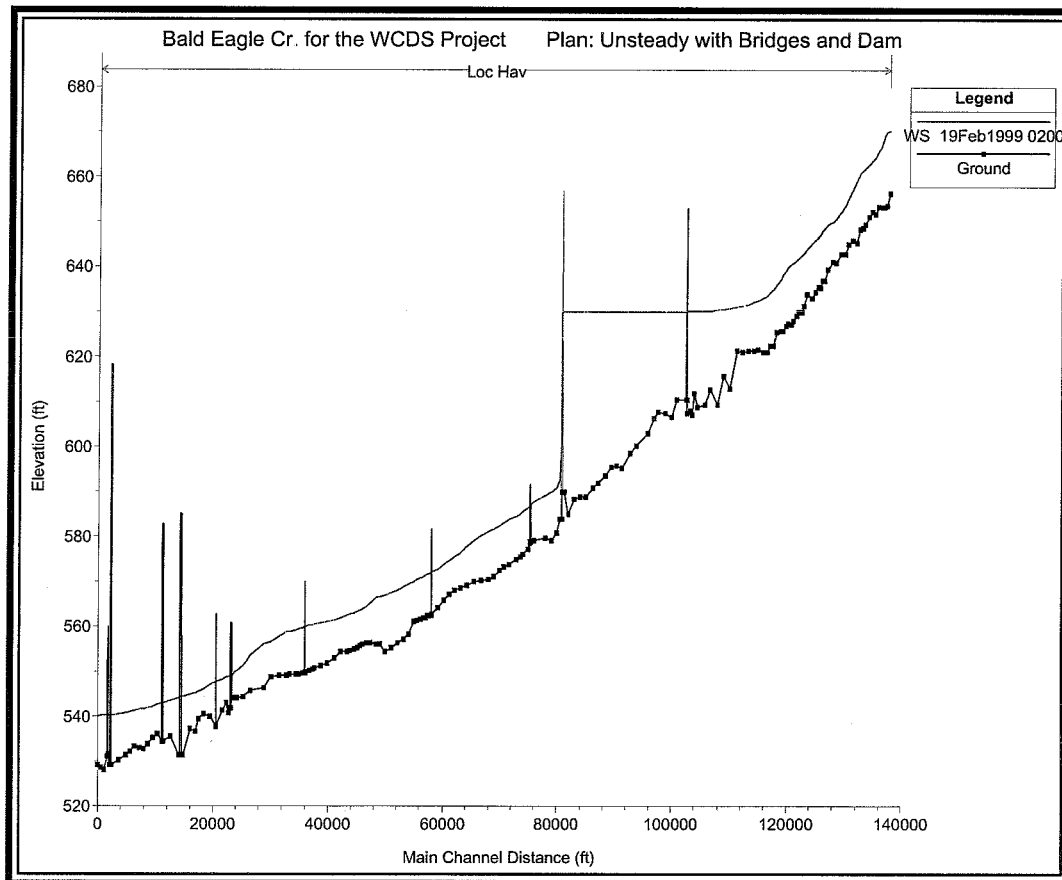


**Figure 8** Reservoir Simulation Model schematic and plot.

River Profile modeling - The total river flow for each of the alternatives is used to determine the water surface profiles above, through, and downstream of the reservoirs. The HEC-RAS model is capable of generating both steady and unsteady flow profiles. Each of these determinations is based on cross-section geometry. Geo-spatial tools may be used to assist in generating the necessary cross-sections from triangular irregular network (TIN) files. Because this operation can be performed with spatially registered cross-sections, the resulting water surface profiles can be used to map inundated areas.

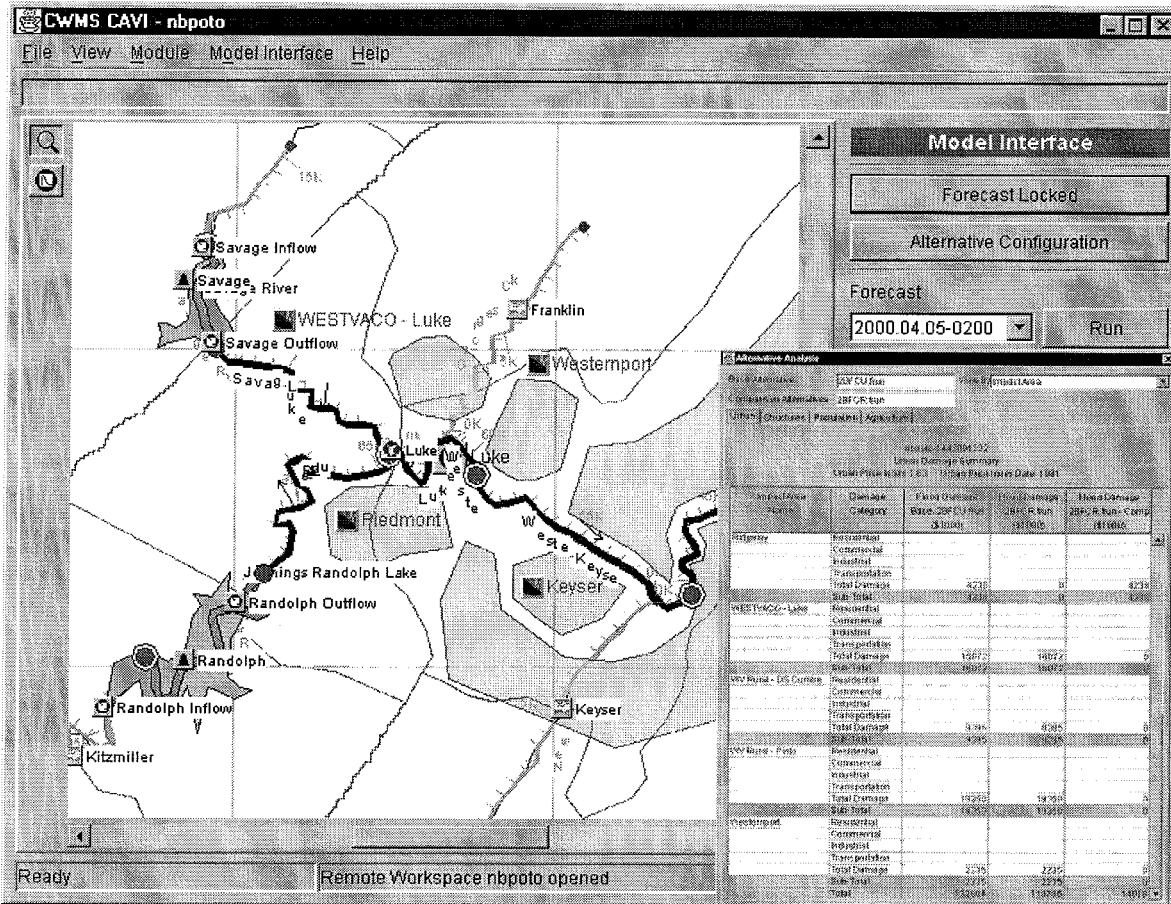


**Figure 9** Geo-Spatial Cross-Sections



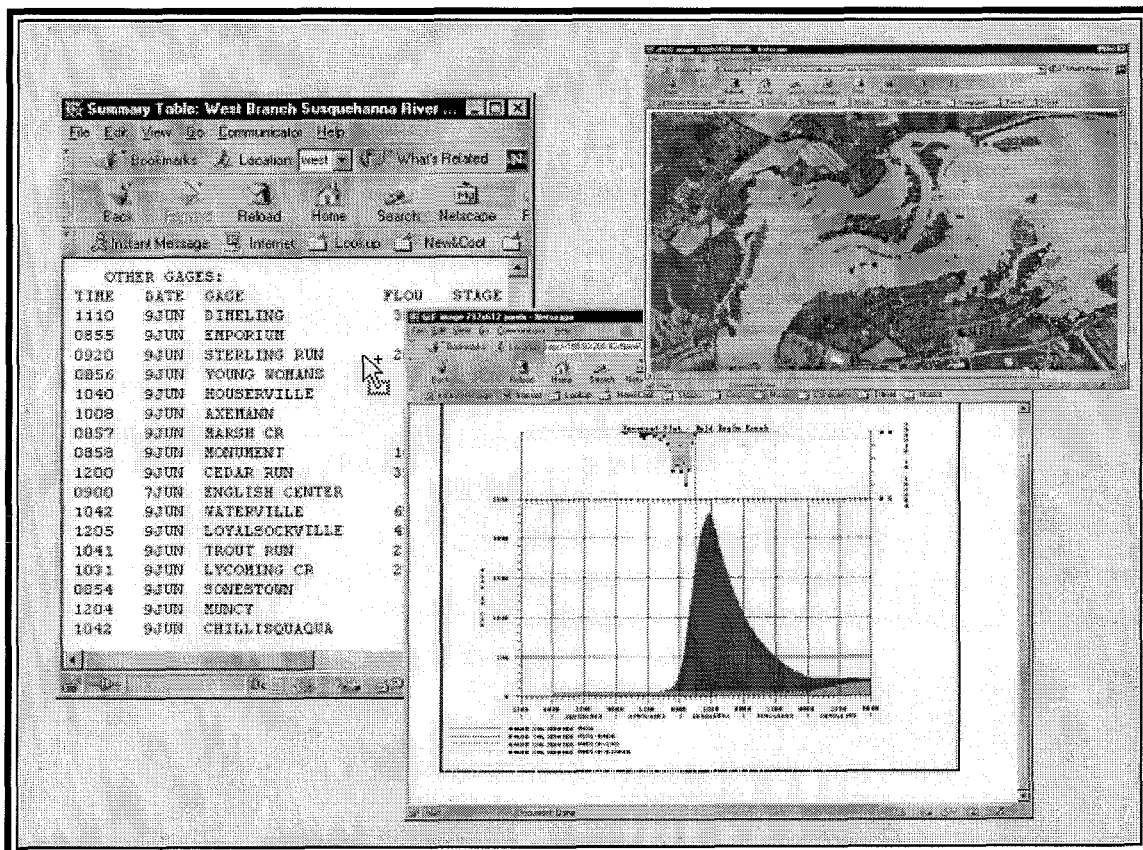
**Figure 10** River Profile

**Flood Impact Analysis** - Based on the information available from the preceding model steps the impacts of flows and stages may be evaluated. This evaluation is based on relationships between flow and/or stage and damage functions. The damage functions may reflect urban, suburban, and agricultural conditions. Impacts are evaluated for any number of impact areas defined by the user. Impact areas may be aggregated by county, state, congressional district, or other desired spatial entity.



**Figure 11** Model schematic showing impact areas and summary table of damages.

**Data Dissemination** - Internet Web and other automated technology are used to provide information from the CWMS to interested parties. Data received from the data acquisition components, derived data, and final project operation data are available for dissemination to other Corps offices, cooperating Federal, state and local agencies, and other public and private interests. A close working relationship exists between the Corps of Engineers and the National Weather Service (NWS). Information that the Corps of Engineers disseminates is solely associated with its mission to operate water projects, and to perform emergency flood fight activities. Public dissemination of flood alerts, flood warnings, and other weather information is the responsibility of the NWS.



**Figure 12** Sample Dissemination Web Products.

## **IV - Summary**

The Corps of Engineers is modernizing the tools it uses in carrying out its water management mission. This includes decision support for reservoir project release determination, and emergency operation activities requiring hydrologic and hydraulic analysis. The modernized products utilize network based client-server architecture. One or more clients may be run from any location in a wide or local area network to access data and models. Any number of alternative scenarios may be evaluated including: various possible future precipitation inputs, reservoir operation alternatives, and river hydraulic or levee conditions. The capabilities described herein are part of the last stage of a three-stage development cycle. Four Corps field offices are being used to test and evaluate the modernized product at each stage in its development. The final product is scheduled for completion in the third quarter of 2001.



## Technical Paper Series

TP-1	Use of Interrelated Records to Simulate Streamflow	TP-39	A Method for Analyzing Effects of Dam Failures in Design Studies
TP-2	Optimization Techniques for Hydrologic Engineering	TP-40	Storm Drainage and Urban Region Flood Control Planning
TP-3	Methods of Determination of Safe Yield and Compensation Water from Storage Reservoirs	TP-41	HEC-5C, A Simulation Model for System Formulation and Evaluation
TP-4	Functional Evaluation of a Water Resources System	TP-42	Optimal Sizing of Urban Flood Control Systems
TP-5	Streamflow Synthesis for Ungaged Rivers	TP-43	Hydrologic and Economic Simulation of Flood Control Aspects of Water Resources Systems
TP-6	Simulation of Daily Streamflow	TP-44	Sizing Flood Control Reservoir Systems by System Analysis
TP-7	Pilot Study for Storage Requirements for Low Flow Augmentation	TP-45	Techniques for Real-Time Operation of Flood Control Reservoirs in the Merrimack River Basin
TP-8	Worth of Streamflow Data for Project Design - A Pilot Study	TP-46	Spatial Data Analysis of Nonstructural Measures
TP-9	Economic Evaluation of Reservoir System Accomplishments	TP-47	Comprehensive Flood Plain Studies Using Spatial Data Management Techniques
TP-10	Hydrologic Simulation in Water-Yield Analysis	TP-48	Direct Runoff Hydrograph Parameters Versus Urbanization
TP-11	Survey of Programs for Water Surface Profiles	TP-49	Experience of HEC in Disseminating Information on Hydrological Models
TP-12	Hypothetical Flood Computation for a Stream System	TP-50	Effects of Dam Removal: An Approach to Sedimentation
TP-13	Maximum Utilization of Scarce Data in Hydrologic Design	TP-51	Design of Flood Control Improvements by Systems Analysis: A Case Study
TP-14	Techniques for Evaluating Long-Term Reservoir Yields	TP-52	Potential Use of Digital Computer Ground Water Models
TP-15	Hydrostatistics - Principles of Application	TP-53	Development of Generalized Free Surface Flow Models Using Finite Element Techniques
TP-16	A Hydrologic Water Resource System Modeling Techniques	TP-54	Adjustment of Peak Discharge Rates for Urbanization
TP-17	Hydrologic Engineering Techniques for Regional Water Resources Planning	TP-55	The Development and Servicing of Spatial Data Management Techniques in the Corps of Engineers
TP-18	Estimating Monthly Streamflows Within a Region	TP-56	Experiences of the Hydrologic Engineering Center in Maintaining Widely Used Hydrologic and Water Resource Computer Models
TP-19	Suspended Sediment Discharge in Streams	TP-57	Flood Damage Assessments Using Spatial Data Management Techniques
TP-20	Computer Determination of Flow Through Bridges	TP-58	A Model for Evaluating Runoff-Quality in Metropolitan Master Planning
TP-21	An Approach to Reservoir Temperature Analysis	TP-59	Testing of Several Runoff Models on an Urban Watershed
TP-22	A Finite Difference Methods of Analyzing Liquid Flow in Variably Saturated Porous Media	TP-60	Operational Simulation of a Reservoir System with Pumped Storage
TP-23	Uses of Simulation in River Basin Planning	TP-61	Technical Factors in Small Hydropower Planning
TP-24	Hydroelectric Power Analysis in Reservoir Systems	TP-62	Flood Hydrograph and Peak Flow Frequency Analysis
TP-25	Status of Water Resource System Analysis	TP-63	HEC Contribution to Reservoir System Operation
TP-26	System Relationships for Panama Canal Water Supply	TP-64	Determining Peak-Discharge Frequencies in an Urbanizing Watershed: A Case Study
TP-27	System Analysis of the Panama Canal Water Supply	TP-65	Feasibility Analysis in Small Hydropower Planning
TP-28	Digital Simulation of an Existing Water Resources System	TP-66	Reservoir Storage Determination by Computer Simulation of Flood Control and Conservation Systems
TP-29	Computer Application in Continuing Education	TP-67	Hydrologic Land Use Classification Using LANDSAT
TP-30	Drought Severity and Water Supply Dependability	TP-68	Interactive Nonstructural Flood-Control Planning
TP-31	Development of System Operation Rules for an Existing System by Simulation	TP-69	Critical Water Surface by Minimum Specific Energy Using the Parabolic Method
TP-32	Alternative Approaches to Water Resources System Simulation		
TP-33	System Simulation of Integrated Use of Hydroelectric and Thermal Power Generation		
TP-34	Optimizing flood Control Allocation for a Multipurpose Reservoir		
TP-35	Computer Models for Rainfall-Runoff and River Hydraulic Analysis		
TP-36	Evaluation of Drought Effects at Lake Atitlan		
TP-37	Downstream Effects of the Levee Overtopping at Wilkes-Barre, PA, During Tropical Storm Agnes		
TP-38	Water Quality Evaluation of Aquatic Systems		

- TP-70 Corps of Engineers Experience with Automatic Calibration of a Precipitation-Runoff Model
- TP-71 Determination of Land Use from Satellite Imagery for Input to Hydrologic Models
- TP-72 Application of the Finite Element Method to Vertically Stratified Hydrodynamic Flow and Water Quality
- TP-73 Flood Mitigation Planning Using HEC-SAM
- TP-74 Hydrographs by Single Linear Reservoir Model
- TP-75 HEC Activities in Reservoir Analysis
- TP-76 Institutional Support of Water Resource Models
- TP-77 Investigation of Soil Conservation Service Urban Hydrology Techniques
- TP-78 Potential for Increasing the Output of Existing Hydroelectric Plants
- TP-79 Potential Energy and Capacity Gains from Flood Control Storage Reallocation at Existing U.S. Hydropower Reservoirs
- TP-80 Use of Non-Sequential Techniques in the Analysis of Power Potential at Storage Projects
- TP-81 Data Management Systems of Water Resources Planning
- TP-82 The New HEC-1 Flood Hydrograph Package
- TP-83 River and Reservoir Systems Water Quality Modeling Capability
- TP-84 Generalized Real-Time Flood Control System Model
- TP-85 Operation Policy Analysis: Sam Rayburn Reservoir
- TP-86 Training the Practitioner: The Hydrologic Engineering Center Program
- TP-87 Documentation Needs for Water Resources Models
- TP-88 Reservoir System Regulation for Water Quality Control
- TP-89 A Software System to Aid in Making Real-Time Water Control Decisions
- TP-90 Calibration, Verification and Application of a Two-Dimensional Flow Model
- TP-91 HEC Software Development and Support
- TP-92 Hydrologic Engineering Center Planning Models
- TP-93 Flood Routing Through a Flat, Complex Flood Plain Using a One-Dimensional Unsteady Flow Computer Program
- TP-94 Dredged-Material Disposal Management Model
- TP-95 Infiltration and Soil Moisture Redistribution in HEC-1
- TP-96 The Hydrologic Engineering Center Experience in Nonstructural Planning
- TP-97 Prediction of the Effects of a Flood Control Project on a Meandering Stream
- TP-98 Evolution in Computer Programs Causes Evolution in Training Needs: The Hydrologic Engineering Center Experience
- TP-99 Reservoir System Analysis for Water Quality
- TP-100 Probable Maximum Flood Estimation - Eastern United States
- TP-101 Use of Computer Program HEC-5 for Water Supply Analysis
- TP-102 Role of Calibration in the Application of HEC-6
- TP-103 Engineering and Economic Considerations in Formulating
- TP-104 Modeling Water Resources Systems for Water Quality
- TP-105 Use of a Two-Dimensional Flow Model to Quantify Aquatic Habitat
- TP-106 Flood-Runoff Forecasting with HEC-1F
- TP-107 Dredged-Material Disposal System Capacity Expansion
- TP-108 Role of Small Computers in Two-Dimensional Flow Modeling
- TP-109 One-Dimensional Model for Mud Flows
- TP-110 Subdivision Froude Number
- TP-111 HEC-5Q: System Water Quality Modeling
- TP-112 New Developments in HEC Programs for Flood Control
- TP-113 Modeling and Managing Water Resource Systems for Water Quality
- TP-114 Accuracy of Computer Water Surface Profiles - Executive Summary
- TP-115 Application of Spatial-Data Management Techniques in Corps Planning
- TP-116 The HEC's Activities in Watershed Modeling
- TP-117 HEC-1 and HEC-2 Applications on the Microcomputer
- TP-118 Real-Time Snow Simulation Model for the Monongahela River Basin
- TP-119 Multi-Purpose, Multi-Reservoir Simulation on a PC
- TP-120 Technology Transfer of Corps' Hydrologic Models
- TP-121 Development, Calibration and Application of Runoff Forecasting Models for the Allegheny River Basin
- TP-122 The Estimation of Rainfall for Flood Forecasting Using Radar and Rain Gage Data
- TP-123 Developing and Managing a Comprehensive Reservoir Analysis Model
- TP-124 Review of U.S. Army corps of Engineering Involvement With Alluvial Fan Flooding Problems
- TP-125 An Integrated Software Package for Flood Damage Analysis
- TP-126 The Value and Depreciation of Existing Facilities: The Case of Reservoirs
- TP-127 Floodplain-Management Plan Enumeration
- TP-128 Two-Dimensional Floodplain Modeling
- TP-129 Status and New Capabilities of Computer Program HEC-6: "Scour and Deposition in Rivers and Reservoirs"
- TP-130 Estimating Sediment Delivery and Yield on Alluvial Fans
- TP-131 Hydrologic Aspects of Flood Warning - Preparedness Programs
- TP-132 Twenty-five Years of Developing, Distributing, and Supporting Hydrologic Engineering Computer Programs
- TP-133 Predicting Deposition Patterns in Small Basins
- TP-134 Annual Extreme Lake Elevations by Total Probability Theorem
- TP-135 A Muskingum-Cunge Channel Flow Routing Method for Drainage Networks
- TP-136 Prescriptive Reservoir System Analysis Model - Missouri River System Application
- TP-137 A Generalized Simulation Model for Reservoir System Analysis
- TP-138 The HEC NexGen Software Development Project
- TP-139 Issues for Applications Developers
- TP-140 HEC-2 Water Surface Profiles Program
- TP-141 HEC Models for Urban Hydrologic Analysis

- TP-142 Systems Analysis Applications at the Hydrologic Engineering Center
- TP-143 Runoff Prediction Uncertainty for Ungauged Agricultural Watersheds
- TP-144 Review of GIS Applications in Hydrologic Modeling
- TP-145 Application of Rainfall-Runoff Simulation for Flood Forecasting
- TP-146 Application of the HEC Prescriptive Reservoir Model in the Columbia River Systems
- TP-147 HEC River Analysis System (HEC-RAS)
- TP-148 HEC-6: Reservoir Sediment Control Applications
- TP-149 The Hydrologic Modeling System (HEC-HMS): Design and Development Issues
- TP-150 The HEC Hydrologic Modeling System
- TP-151 Bridge Hydraulic Analysis with HEC-RAS
- TP-152 Use of Land Surface Erosion Techniques with Stream Channel Sediment Models
- TP-153 Risk-Based Analysis for Corps Flood Project Studies - A Status Report
- TP-154 Modeling Water-Resource Systems for Water Quality Management
- TP-155 Runoff simulation Using Radar Rainfall Data
- TP-156 Status of HEC Next Generation Software Development
- TP-157 Unsteady Flow Model for Forecasting Missouri and Mississippi Rivers
- TP-158 Corps Water Management System (CWMS)
- TP-159 Some History and Hydrology of the Panama Canal
- TP-160 Application of Risk-Based Analysis to Planning Reservoir and Levee Flood Damage Reduction Systems
- TP-161 Corps Water Management System - Capabilities and Implementation Status

