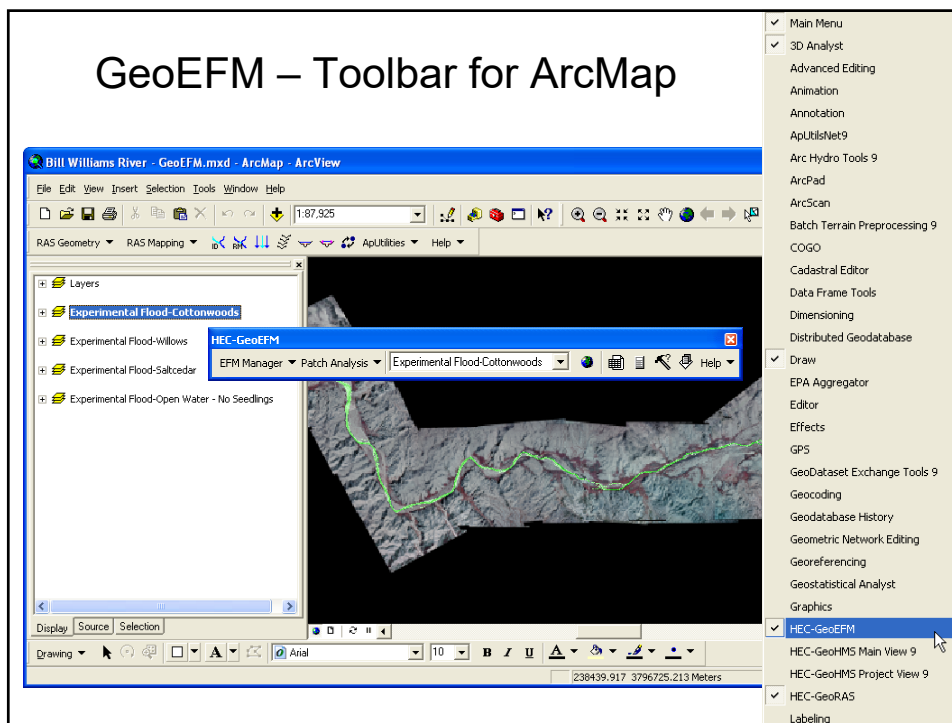


1



2

GeoEFM – Getting Started

The screenshot shows the HEC-GeoEFM application window with the 'Patch Analysis' menu open. Two sub-dialogs are highlighted with red boxes and arrows:

- Synchronize Project:** A dialog box titled 'Synchronize Project' with 'EFM Project' set to 'Bill Williams River - Vegetation Establishment.efm'. It has 'OK' and 'Cancel' buttons. A note next to it says: "... manage connection between EFM and GeoEFM".
- Manage Standard Views:** A dialog box titled 'Manage Standard Views' showing a list of layers to be synchronized. The 'Layers' list includes: Cottonwood_establishment, Cottonwood_maintenance, Cottonwood_recruitment, Willow_establishment, Willow_maintenance, Willow_recruitment, Tamarix_establishment, and Tamarix_maintenance. Below this is a 'Destination Standard View' dropdown set to 'Experimental Flood Cottonwoods' and a table for 'Layers and Settings'. A note next to it says: "... manage data layers within the GeoEFM project".

3

GeoEFM – View Selector

The screenshot shows the ArcMap interface with a map of the Bill Williams River. The 'Layers' panel on the left shows several experimental flood scenarios. The 'HEC-GeoEFM' dialog box is open, with the 'View Selector' sub-dialog active. The 'View Selector' dropdown menu is open, showing options: 'Experimental FloodWillows', 'Experimental FloodCottonwoods', 'Experimental FloodWillow', 'Experimental FloodSaltcedar', and 'Experimental FloodOpen Water - No Seedlings'. A note at the bottom of the slide says: "...toggle between ecosystem aspect or water management scenarios".

4

GeoEFM – Habitat Area

...compute/tabulate habitat areas for different management or restoration scenarios

Relationship	Full Record below Dam		Change, acres
	Area, acres	Area, acres	
Open Water - No Seedlings	429	429	.0
Saltcedar	431	576	145.0
Willows	468	891	423.7
Cottonwoods	649	1,080	431.2

5

GeoEFM – Habitat Connectivity

...corridors, distribution, interaction

Patch Count Distribution

Rank	Patch Count
1	450
2	400
3	350
4	300
5	250
6	200
7	150
8	100
9	50
10	20
11	10
12	5
13	2
14	1

6

GeoEFM – Habitat Suitabilities

Habitat Suitability Index

Original Habitat Layer

Suitable Habitat Layers

Habitat Suitability Index Manager

Variable	Suitability
0	0
0.5	1
3	1
3.5	0.8
4	0
6	0
*	*

...manager allows users to create, view, edit, and import HSI curves.

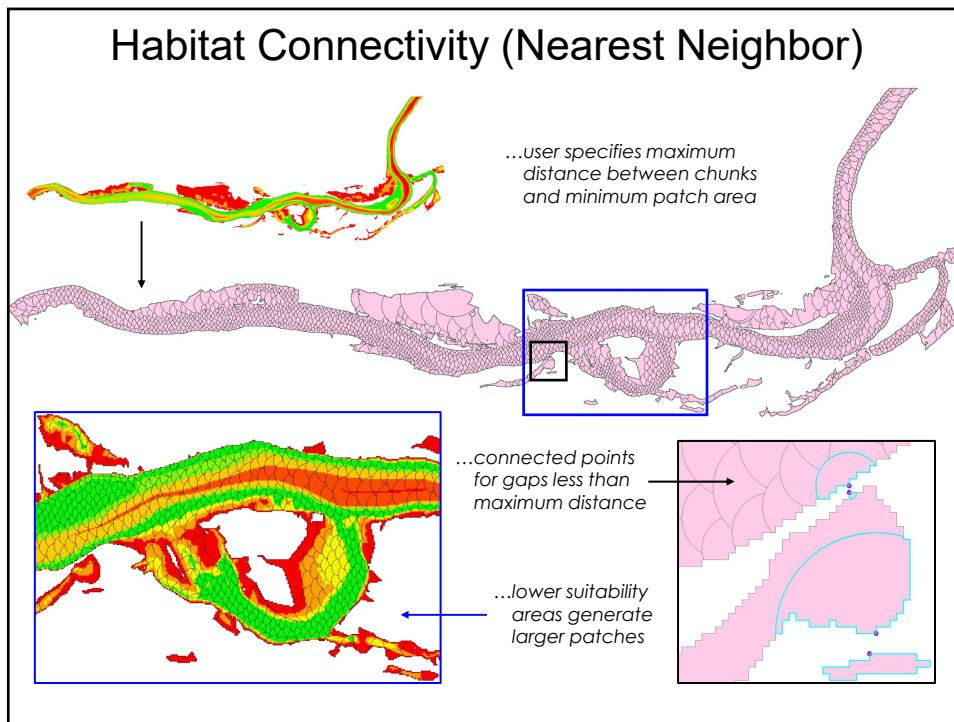
7

Habitat Connectivity (Buffer Method)

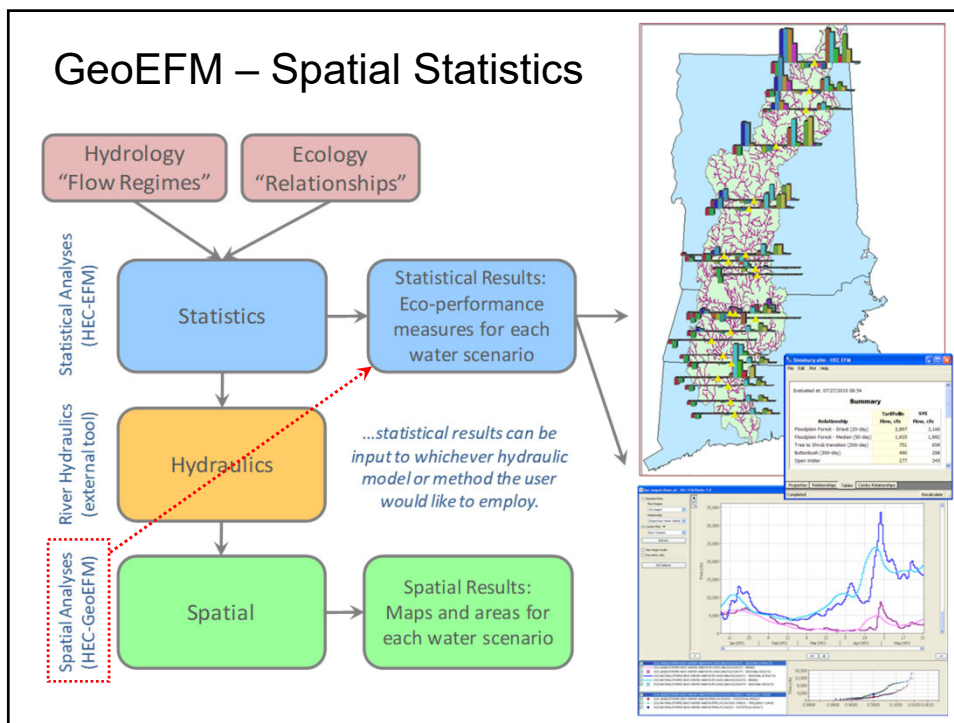
...user specifies radius, minimum patch area, and number of shifts

...black circles meet patch area requirement, blue circles do not.

8



9



10

