

Terrain Modification

Cameron Ackerman, P.E., D.WRE

USACE, Institute for Water Resources, Hydrologic Engineering Center



US Army Corps
of Engineers®

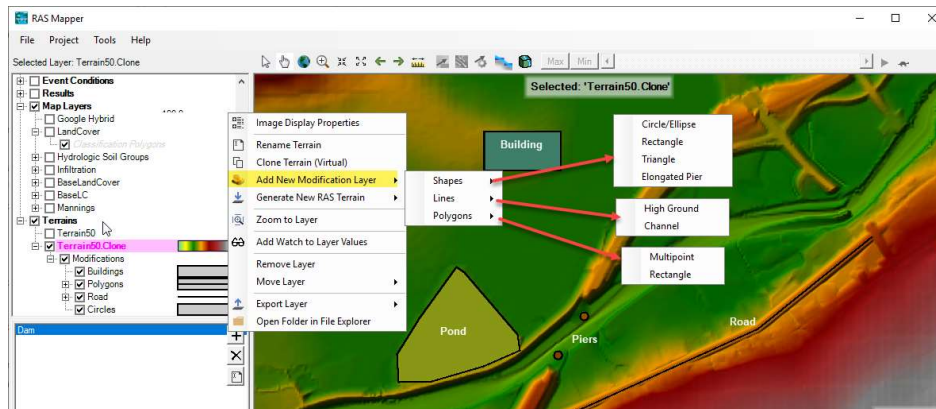


1



Terrain Modifications

- Vector Overrides to Terrain Layer
 - Simple Shapes (Piers), Lines (Channel, Roads, Levees), Polygons (Areas, Buildings)



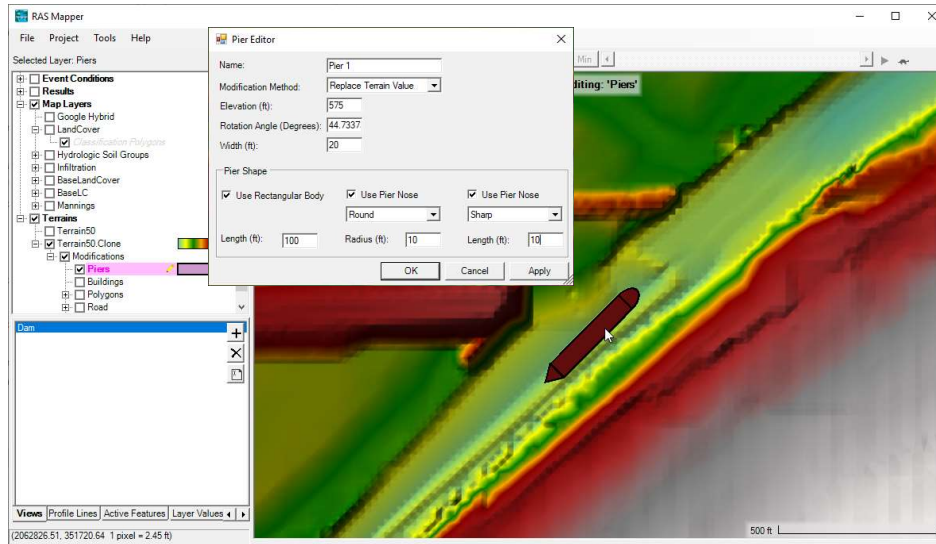
2

Copy Modifications between Terrain Layers

Use existing Editing Tools! (Copy/Paste/Import ...)

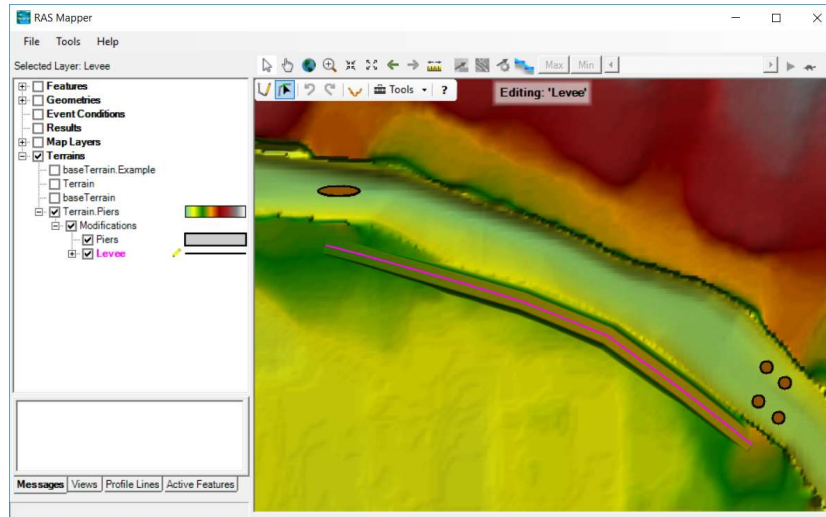


Shapes - Piers





Lines - High Ground





Lines – High Ground

Ground Line Editor

Name (Optional): Levee 1

Modification Type: Higher (Terrain/User) Value

Top Width: 40

Left Side Slope (H:V): 2

Right Side Slope (H:V): 2

Lateral Extent Limits: 50

Snapping Tolerance: 20

Polyline Length: 1161.64 (ft)

Station-Elevation [X,Y Data]

Import From ShapeFile

| | X | Y |
|---|--------------------|--------------------|
| 1 | 407417.38769188... | 1804497.9113489... |
| 2 | 407251.73357862... | 1804628.6909041... |
| 3 | 407065.73598900... | 1804762.3766717... |
| 4 | 406859.39491302... | 1804846.65682952 |
| 5 | 406722.80293314... | 1804887.3438022... |
| 6 | 406469.962459758 | 1804959.9991106... |
| 7 | 406379.86987728... | 1804983.2488093... |

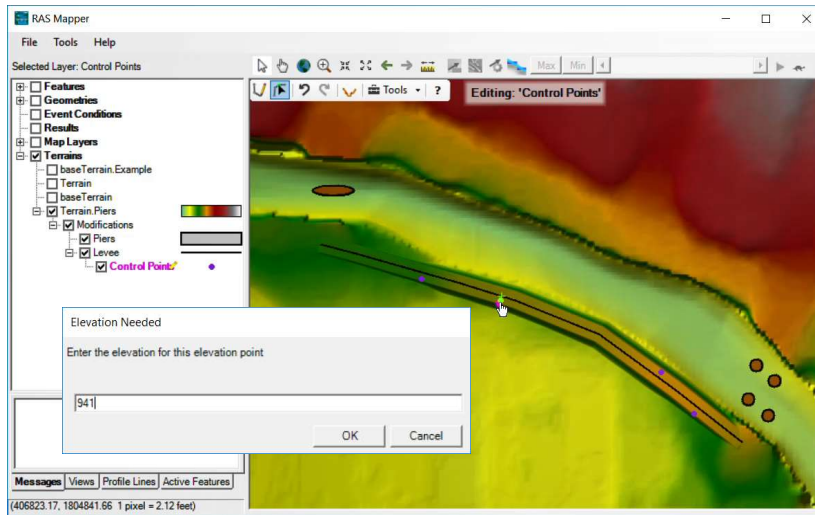
Plot

XS View

Profile Plot



Lines – Elevation Control Points





Lines – Elevation Control Point

- Elevation control points shown in grey

Ground Line Editor

Name (Optional): Levee 1

Modification Type: Higher (Terrain/User) Value

Top Width: 40

Left Side Slope (H:V): 2

Right Side Slope (H:V): 2

Lateral Extent Limits: 50

Snapping Tolerance: 20

Polyline Length: 1161.64 (ft)

Station-Elevation | X,Y Data

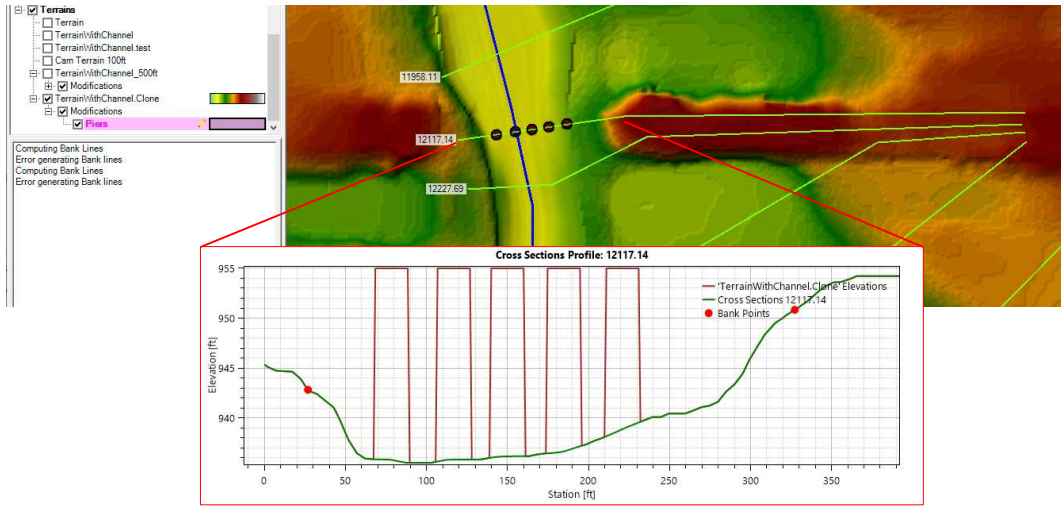
| Station | Elevation |
|----------------------|-----------|
| 1 0 | 943 |
| 2 143.51341941785... | 944 |
| 3 269.12608846422... | 944 |
| 4 400 | 942.5 |
| 5 800 | 942.5 |
| 6 823.32691655262... | 941 |
| 7 970.59058152351... | 941 |
| 8 1161.6400146484... | 941 |

Plot | XS View

Plot | Table | Profile Plot



Terrain Modifications



Questions?



US Army Corps
of Engineers®

